






D1511/780 Bourke Street Redfern NSW

3  2  2 

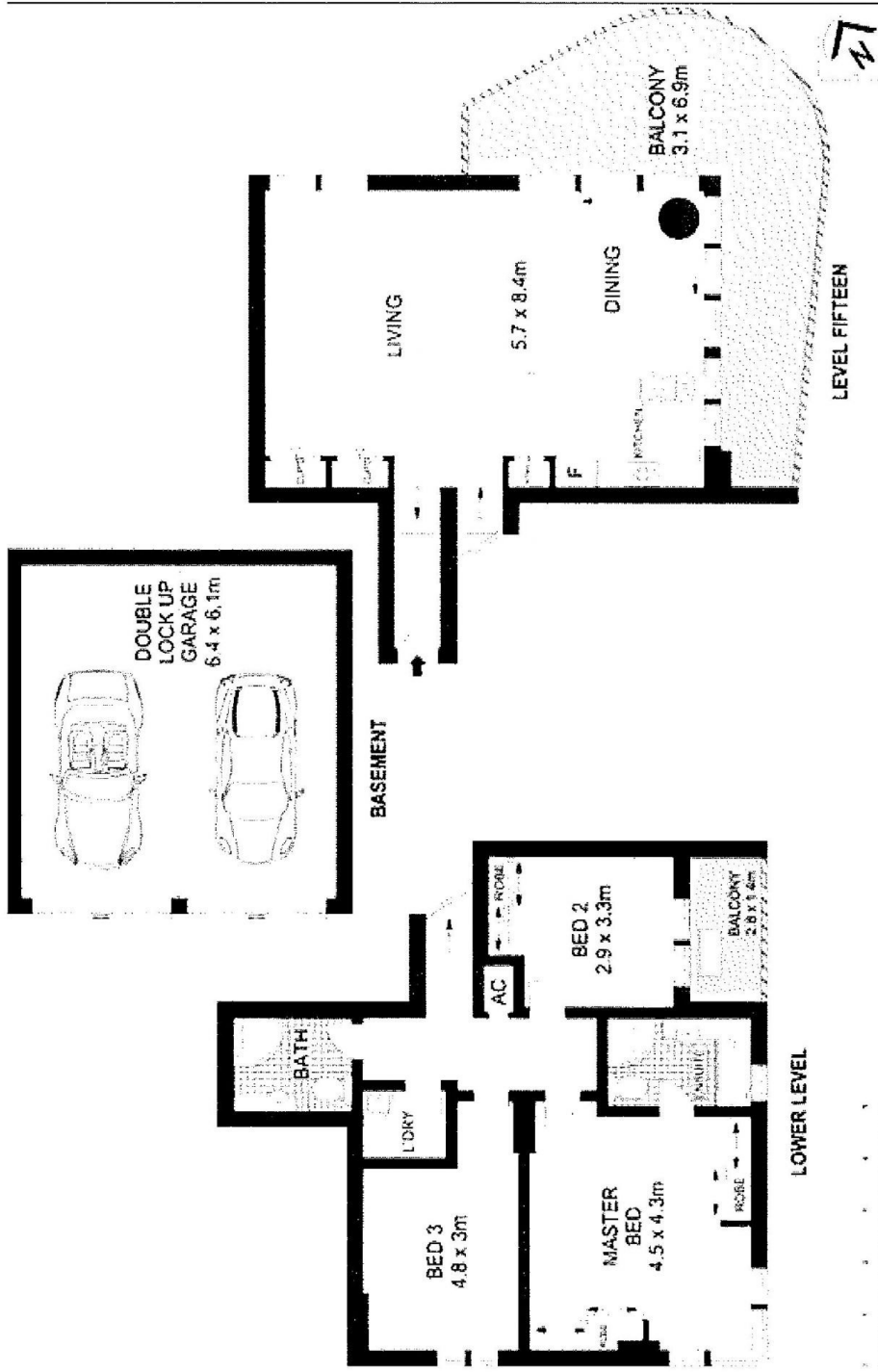
Located on the 15th floor of the prestigious Dowling building, this 3 bedroom corner unit has the perfect North-East aspect and enjoys some of the best views in Sydney. A stunning sweep of views over the greenery of Moore Park and towards the City Skyline. This unit is presented in immaculate condition with brand new wool carpeting and freshly painted throughout. Standout features are ducted air-conditioning so all rooms can be heated or cooled, 2 side by side lockup garages and double glazed windows.,

View : <https://www.shearerproperty.com.au/lease/nsw/eastern-suburbs/redfern/residential/apartment/7894423>

? Extra large living and dining opening to wraparound terrace

? Upgraded kitchen, stone benchtops, Ilve 900cm gas cooktop

? Translucent glass splash backs, Bosch dishwasher, 8 power points



Scale of metres indicated on this drawing. Dimensions are approximate. All information contained herein is provided from the files and is based on the information available at the time of the preparation of this drawing. The information contained herein is provided for your information only and should not be relied upon for any other purpose. The information contained herein is provided for your information only and should not be relied upon for any other purpose.