



H422/780 Bourke Street Redfern NSW

1 1 1

UNDER CONTRACT

This 1 bedroom unit is so big it thinks it's a 2 bedroom!

Very bright and spacious split level apartment in the beautiful environs of Moore Park gardens with an easterly outlook over the manicured gardens. This particular floorplan is one of the most wanted as it features large rooms and has a completely separate dining room - versatile for home office, second living or dining room.

With a generous 102 sqm (incl car space) this is a fantastic opportunity to enter the prestige market, or to acquire a prime investment. An extra bonus is that both the living room and bedroom are air-conditioned.

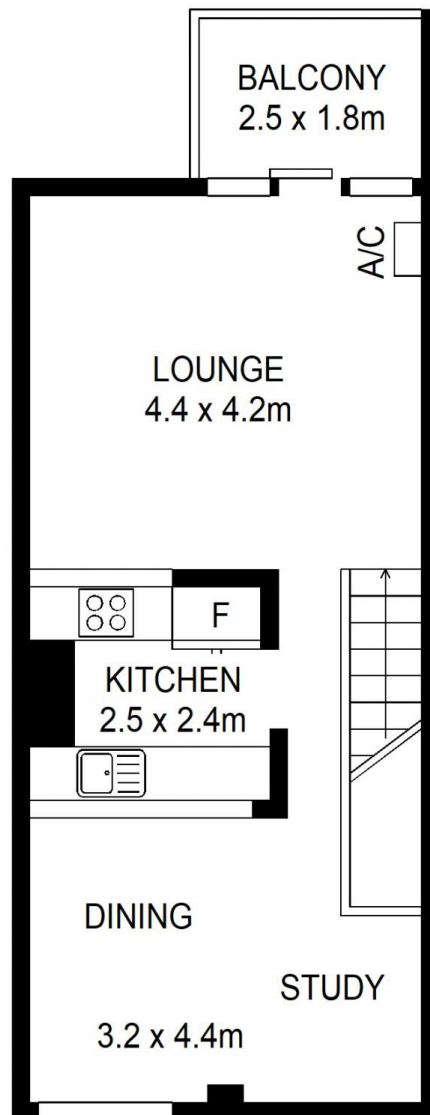
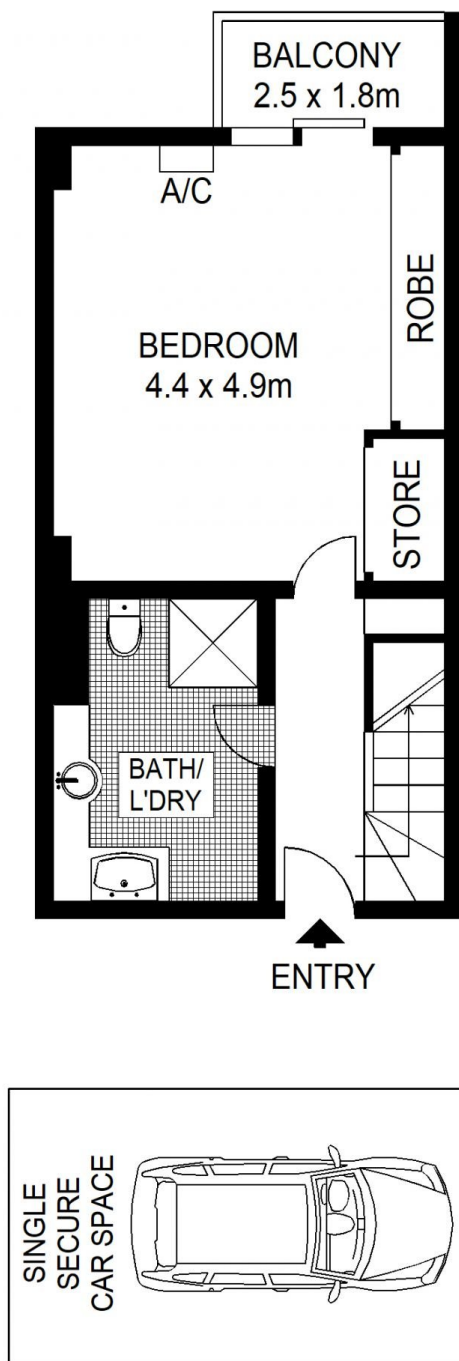
With a modern kitchen including a dishwasher and Smeg

Price : \$ 900,000

View : <https://www.shearerproperty.com.au/sale/nsw/eastern-suburbs/redfern/residential/apartment/7674960>



Sue Shearer
02 9310 1801



Scale shown in metres. All dimensions herein are approximate and gathered from sources believed to be reliable. Whilst every effort is made for the accuracy of our floor plans, interested parties should rely on their own enquiries.

H422/780 Bourke Street, Redfern

shearer
property

