



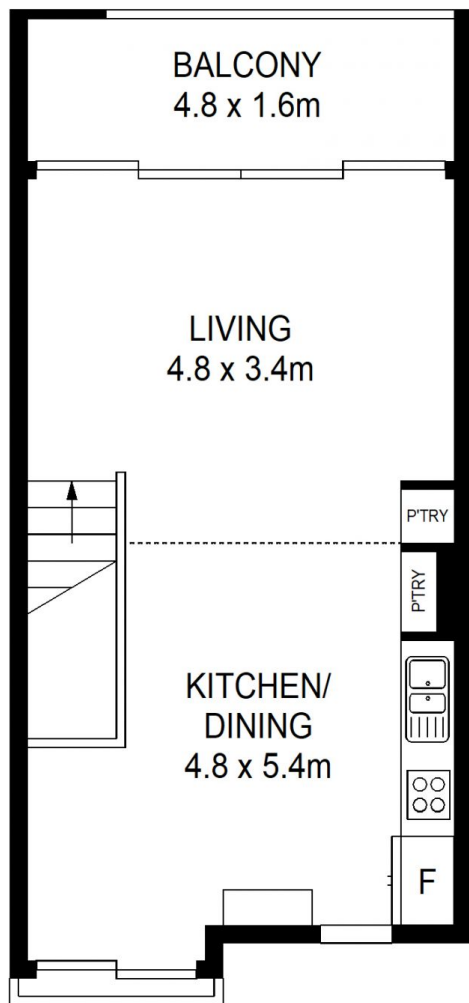
H216/780 Bourke Street Redfern NSW

1 1 1

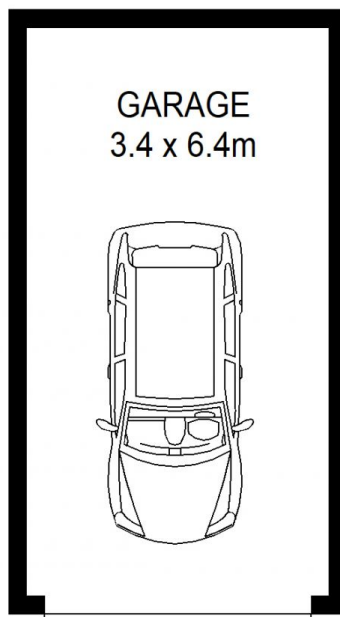
Bursting with light from it's due north aspect and flowing spaciouly over two levels for a total of 103sqm including garage. Located in the quiet Hopetoun building with leafy outlooks, this unit flows over 2 levels and has it's own huge lockup garage within the security parking area.

View : <https://www.shearerproperty.com.au/lease/nsw/eastern-suburbs/redfern/residential/unit/7613659>

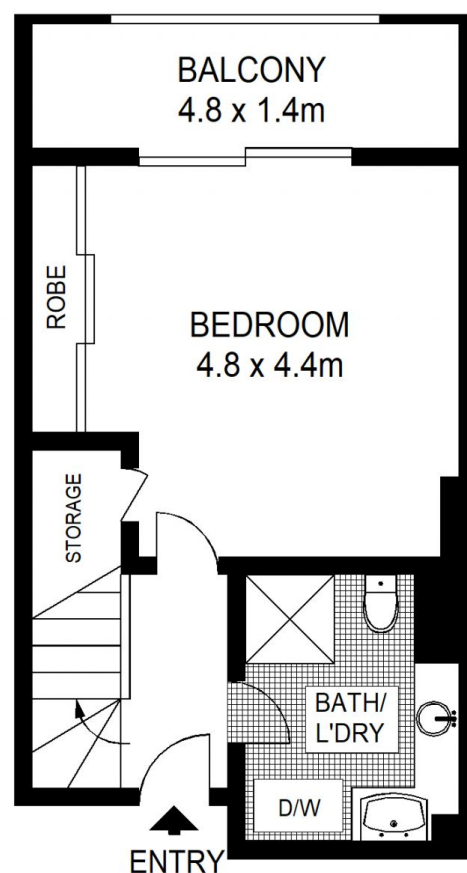
- ? Second floor position filled with winter sunlight
- ? Open plan living area combined with dining
- ? Wall to wall and floor to ceiling sliding glass doors to balcony
- ? Contemporary timber finish kitchen with Smeg gas cooktop
- ? King sized bedroom with triple-door mirrored robe
- ? Bedroom also opens onto its own sunny balcony
- ? Large modern bathroom with adjoining laundry
- ? Lock up garage (very rare) within security parking area
- ? Garage measures 6.4m x 3.4m will fit large car + storage



FIRST LEVEL



(NOT IN POSITION)



GROUND LEVEL



Scale shown in metres. All dimensions herein are approximate and gathered from sources believed to be reliable. Whilst every effort is made for the accuracy of our floor plans, interested parties should rely on their own enquiries.



H216,780 Bourke Street, Redfern

shearer
property