



210/380 Harris Street Pyrmont NSW

1  1  1 

UNDER CONTRACT

This one bedroom is so huge it thinks it's two bedroom! Located on the second floor, this oversized apartment blends edgy industrial chic with the highest of quality appointments including timber floors, towering 3.5m ceilings, huge paned windows and open plan living with a large separate dining area or versatile full-sized home office or study. This unit is exceptional in that it is located on the same floor as your security parking space so it's just a level few metres from your front door. Ideal proximity to Darling Harbour, local pubs and restaurants and the CBD.

Features -

- Large open plan living with separate dining or full-sized

Type : Apartment

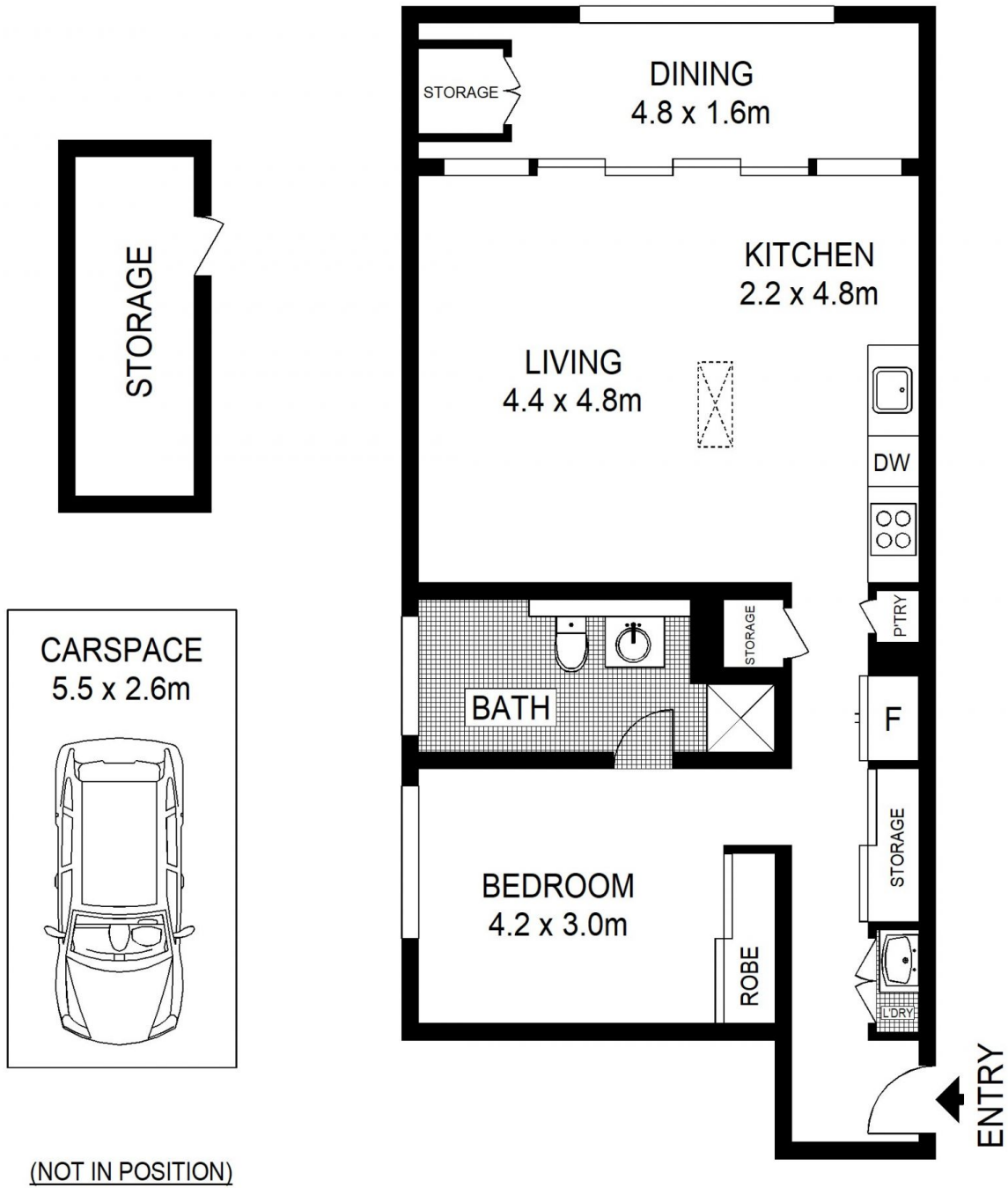
Price : \$ 740,000

View : <https://www.shearerproperty.com.au/sale/nsw/sydney-city/pyrmont/residential/apartment/7559262>



Sue Shearer
02 9310 1801

[For full version visit the website](https://www.shearerproperty.com.au)



Scale shown in metres. All dimensions herein are approximate and gathered from sources believed to be reliable. Whilst every effort is made for the accuracy of our floor plans, interested parties should rely on their own enquires. Floor Plans by Industrie Media | industriemedia.tv

210/380 Harris Street, Pyrmont

