

G604/780 Bourke Street Redfern NSW

2 2 1

From the 6th floor north facing position, you will be so peacefully 'at home' here as you gaze over manicured gardens and trees - it's THAT nice. A large entry foyer introduces you to this oversized unit which has been completely renovated with no expense spared and has beautiful timber flooring throughout.

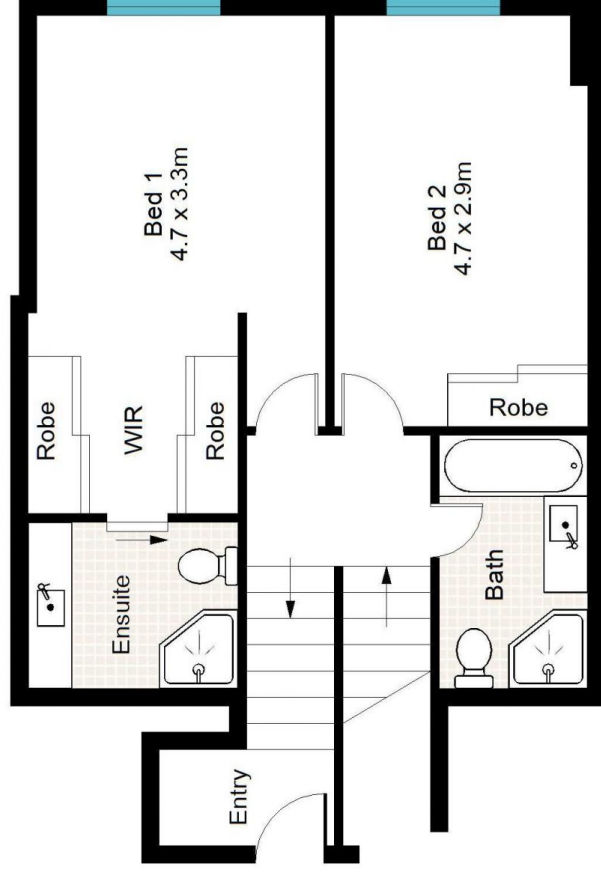
Features Include:

- Spacious open plan living/ dining area backdropped by trees
- Large terrace big enough to please any entertainer
- Modern marble kitchen with stainless Bosch appliances and integrated Fisher and Paykel fridge
- North to south air flow throughout for our lovely summer breezes

View : <https://www.shearerproperty.com.au/lease/nsw/eastern-suburbs/redfern/residential/apartment/7524675>

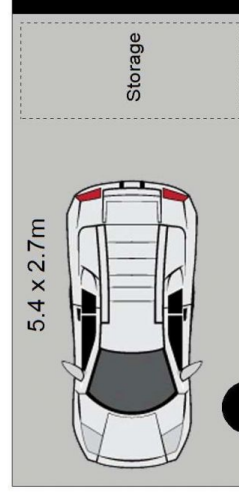
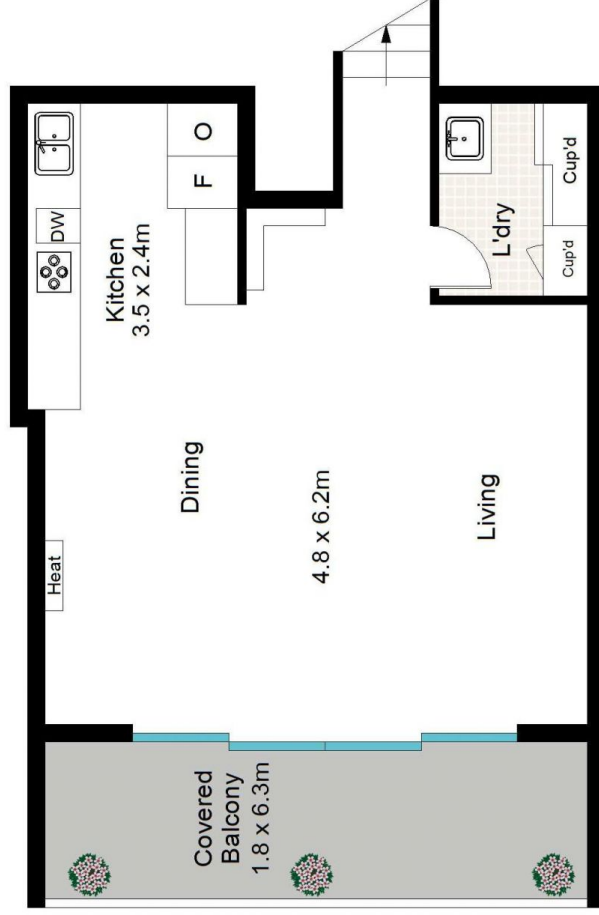


Sue Shearer
02 9310 1801



UPPER LEVEL

LOWER LEVEL

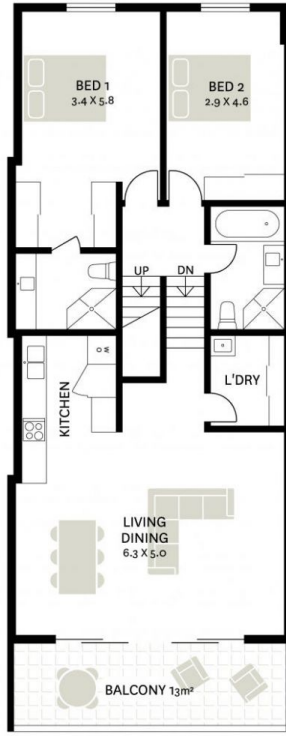
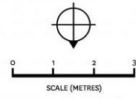
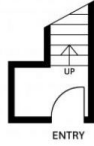


SECURE PARKING
CP 1

MOORE PARK GARDENS G604/780 BOURKE STREET, REDFERN

Disclaimer: Sydney Floor Plans A.B.N. 80 952 665 571 mob. 0402073101
This plan serves only as a guide for marketing purposes. 01/20
Dimensions are approximate and should not be relied upon for specific detail.





WE BELIEVE THE INFORMATION IN THIS DOCUMENT TO BE
RELIABLE, HOWEVER INTERESTED PERSONS SHOULD MAKE
THEIR OWN ENQUIRIES. DIMENSIONS ARE APPROXIMATE.