



## D1216/780 Bourke Street Redfern NSW

1 1 1

Occupying a prized northerly position on the 12th floor of the Dowling Building in the award winning Moore Park Gardens complex, this apartment features a unique split level design and is enveloped in mesmerising views towards the City Skyline, beautiful by day, and simply magical by night.

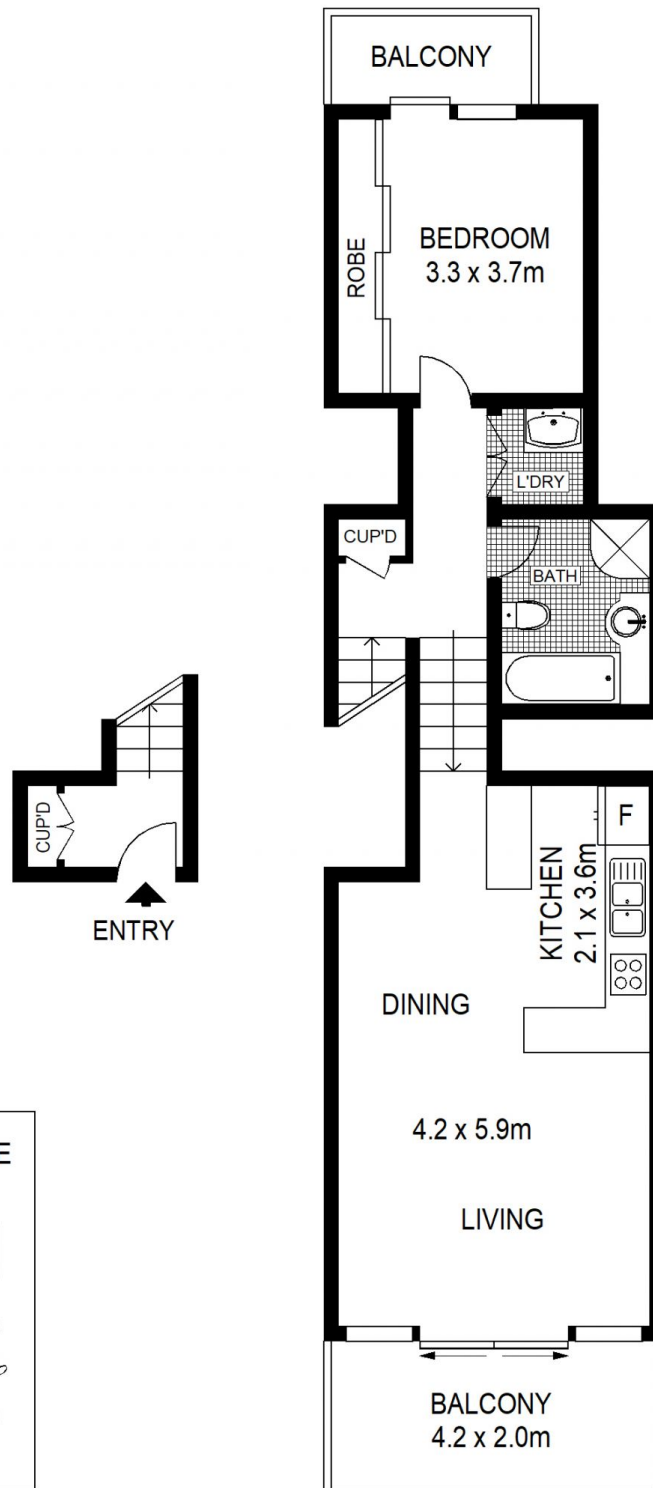
Separate entry area with handy storage  
Large open plan living and dining area  
Full-width private balcony for year round use  
Bedroom set away from living area with built-in robes  
Contemporary kitchen, Smeg and Bosch appliances  
Kitchen features a useful two door pantry cupboard  
Large bathroom with separate bath and shower, rare in 1 bed units  
Separate internal laundry with dryer fitted  
Very secure and glamorous building with swipe key

**Price** : \$ 870,000

**View** : <https://www.shearerproperty.com.au/sale/nsw/ea-stern-suburbs/redfern/residential/unit/7481690>



**Sue Shearer**  
02 9310 1801



Scale shown in metres. All dimensions herein are approximate and gathered from sources believed to be reliable. Whilst every effort is made for the accuracy of our floor plans, interested parties should rely on their own enquiries.



D1216/780 Bourke Street, Redfern

**shearer**  
property