

## F16/780 Bourke Street Redfern NSW

1 1 1

Situated in the popular Moore Park Gardens complex this townhouse style apartment is a rare opportunity indeed. In an ideal location overlooking the swimming pool with a northerly aspect, it offers space and comfort and the perfect floorplan with separate lounge, separate dining, and own internal access to your own rooftop terrace taking in the sweep of views towards the City skyline.

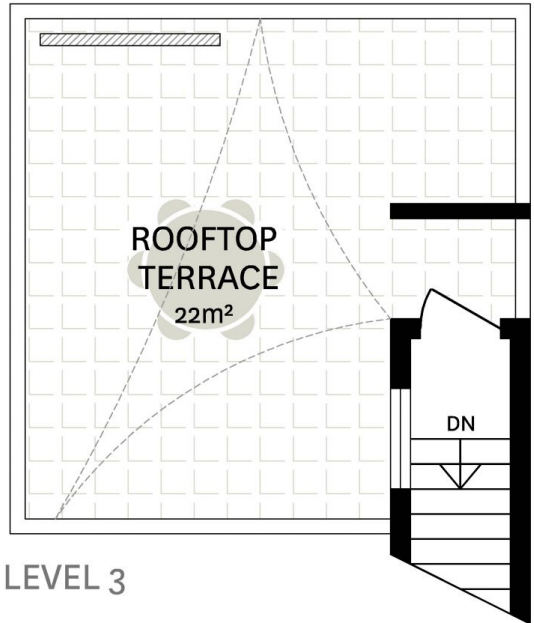
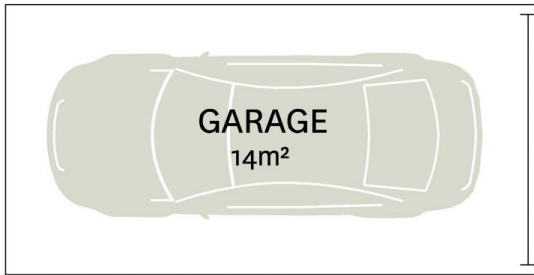
Features are:

- Polished floorboards throughout with carpet in the bedroom
- Large size bedroom with built in robes, storage cupboard
- Separate Lounge & Dining areas with pool & leafy views
- Modern kitchen with Stone benchtop and gas cooking
- Spacious bathroom with separate bath and shower
- Internal laundry with dryer
- Reverse Cycle Air Conditioning

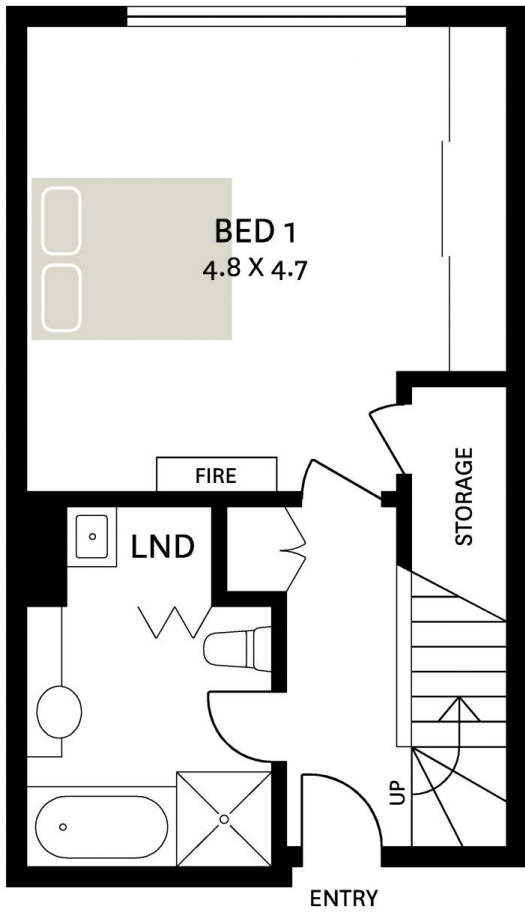
**View** : <https://www.shearerproperty.com.au/sale/nsw/ea-stern-suburbs/redfern/residential/unit/7431926>



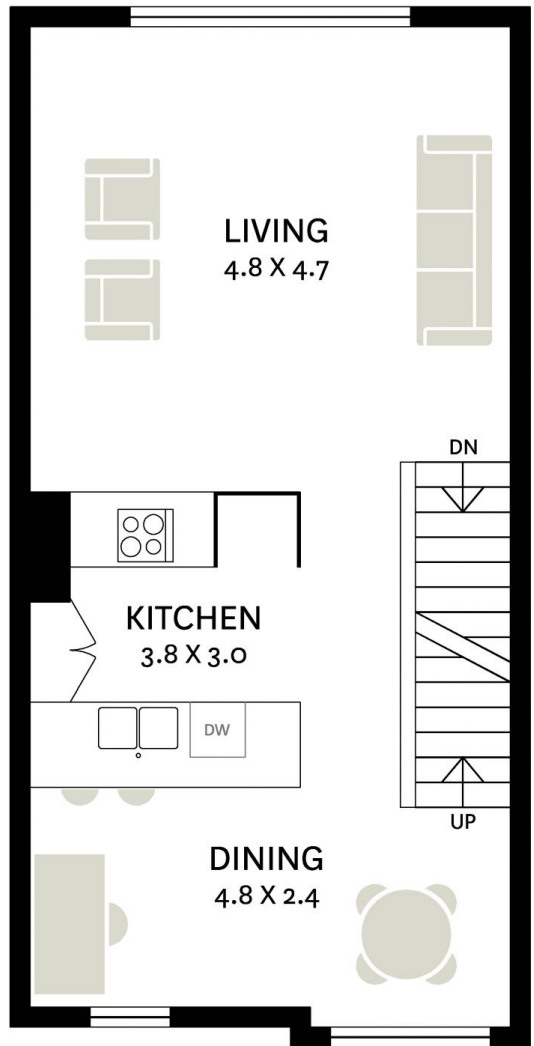
**Sue Shearer**  
02 9310 1801



LEVEL 3



LEVEL 1



LEVEL 2



SCALE (METRES)

WE BELIEVE THE INFORMATION IN THIS DOCUMENT TO BE RELIABLE, HOWEVER INTERESTED PERSONS SHOULD MAKE THEIR OWN ENQUIRIES. DIMENSIONS ARE APPROXIMATE.