



## C714/6-8 Crescent Street Redfern NSW

1 1 1

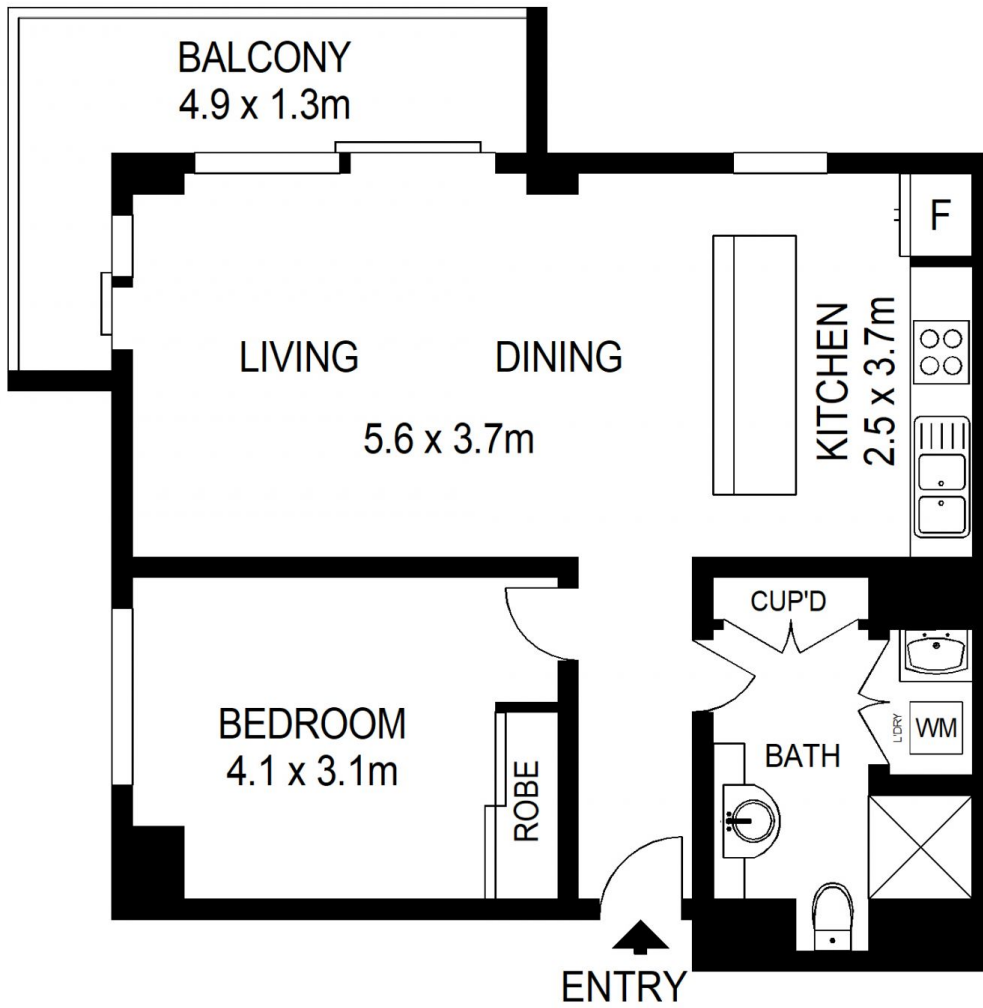
So many wanted features, this has it all! Stunning views? Yes. Corner unit with windows on north and east sides? Yes. Top floor so no-one above? Yes. Only one common wall? Yes!

**View** : <https://www.shearerproperty.com.au/sale/nsw/ea-stern-suburbs/redfern/residential/unit/7287036>

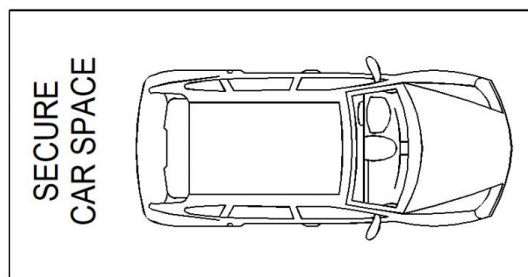
- \* Excellent presentation with new carpets
- \* Open plan living and dining, balcony
- \* Large kitchen, gas Smeg cooktop
- \* Modern bathroom with storage and laundry
- \* Bright bedroom with built-in robes
- \* 25M heated pool, sauna and large gym
- \* Secure undercover parking
- \* Building Managers on-site
- \* Plenty of visitors parking for guests and inspections
- \* Pets permitted on approval of Strata Committee
- \* Situated at the quiet Moore Park end of Bourke Street



**Sue Shearer**  
02 9310 1801



LEVEL SEVEN



BASEMENT



Scale shown in metres. All dimensions herein are approximate and gathered from sources believed to be reliable. Whilst every effort is made for the accuracy of our floor plans, interested parties should rely on their own enquiries.



C714/6-8 Crescent Street, Redfern