



**B301/780 Bourke Street Redfern NSW**

3 2 2

## UNIT CONTRACT

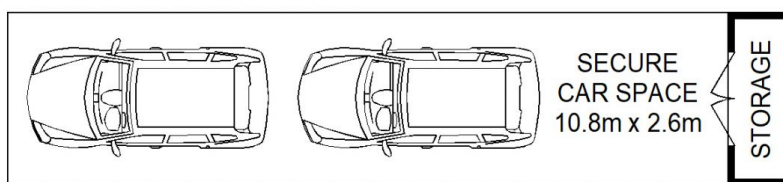
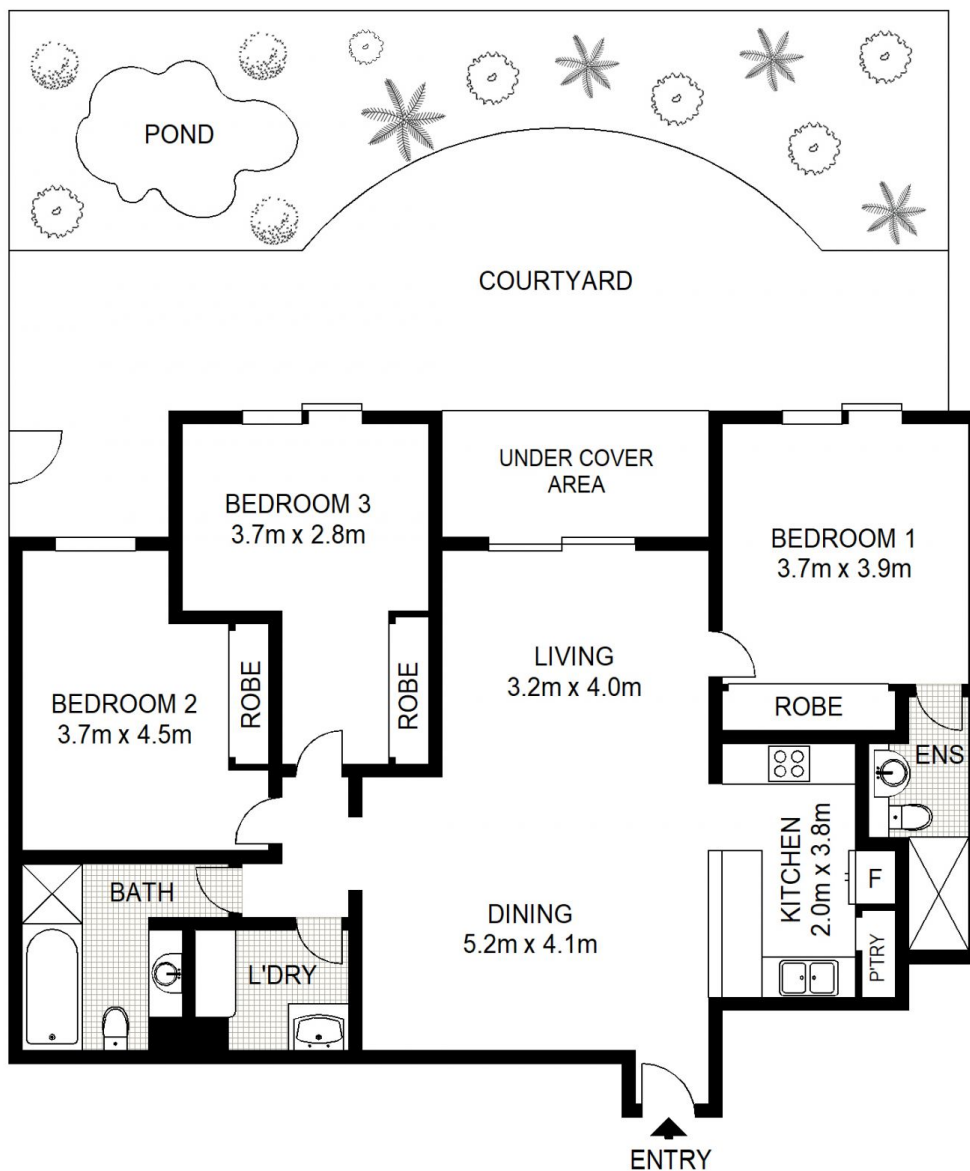
Rare 3 bedroom single level unit with a huge courtyard garden completely framed in greenery. Offering 100% privacy and green outlooks from every room this very sizeable unit is located in the Bowers Building of the acclaimed Moore Park Gardens. Presented in good original condition awaiting your personal touches, this is a rare opportunity to acquire this desirable house-sized floorplan with garden and alfresco living.

201sqm approx with Easterly aspect  
Expansive living and dining area flowing outdoors  
Modern kitchen with dishwasher and gas cooktop  
Gardener's dream courtyard garden with fishpond  
Undercover alfresco area with fold-out awning  
Full privacy in each and every room - just green outlooks  
Three bedrooms all with built-in robes

**View :** <https://www.shearerproperty.com.au/sale/nsw/ea-stern-suburbs/redfern/residential/unit/7235205>



**Sue Shearer**  
02 9310 1801



**(NOT IN POSITION)**



Scale shown in metres. All dimensions herein are approximate and gathered from sources believed to be reliable. Whilst every effort is made for the accuracy of our floor plans, interested parties should rely on their own enquiries.

B301/780 Bourke Street, Redfern

**shearer**  
property

