



**H216/780 Bourke Street Redfern NSW**

1 1 1

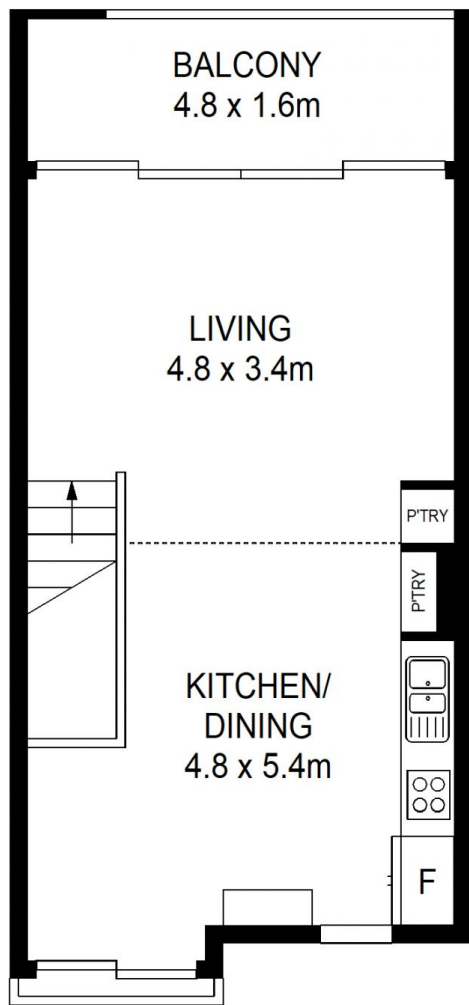
Every now and then something exceptional comes along and this unit is one of those rare properties. Bursting with light from it's due north aspect and flowing spaciouly over two levels for a total of 103sqm including garage. Located in the quiet Hopetoun building with leafy outlooks, this unit also comes with some special extras such as lush vertical wall garden feature, Bose wall speakers and to top it all off, a fully enclosed garage for your car and storage.

**View :** <https://www.shearerproperty.com.au/sale/nsw/ea-stern-suburbs/redfern/residential/unit/7007235>

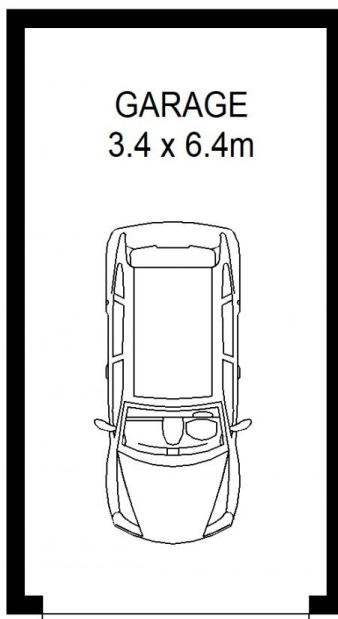


**Sue Shearer**  
02 9310 1801

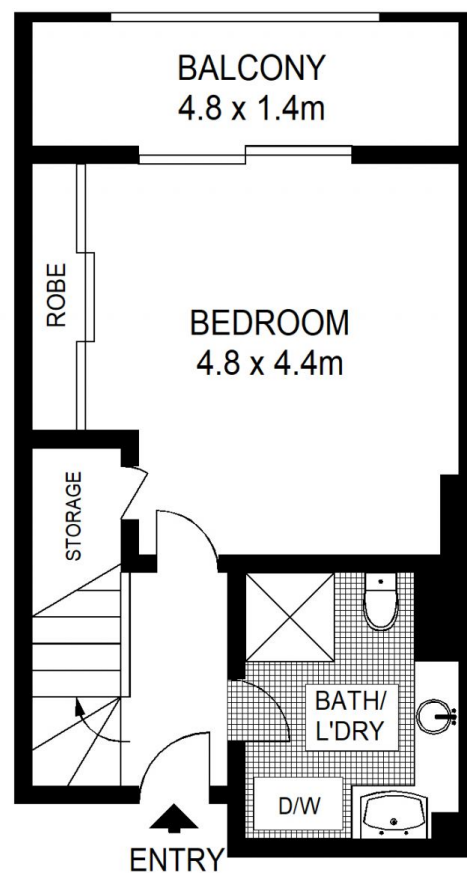
- ? Second floor position filled with winter sunlight
- ? Beautifully presented open plan living area
- ? Wall to wall and floor to ceiling sliding glass doors to balcony
- ? Contemporary timber finish kitchen with Smeg gas cooktop
- ? King sized bedroom with triple-door mirrored robe
- ? Bedroom also opens onto its own sunny balcony



FIRST LEVEL



(NOT IN POSITION)



GROUND LEVEL



Scale shown in metres. All dimensions herein are approximate and gathered from sources believed to be reliable. Whilst every effort is made for the accuracy of our floor plans, interested parties should rely on their own enquiries.



H216,780 Bourke Street, Redfern

**shearer**  
property