



C311/6 Crescent Street Redfern NSW

1 1 1

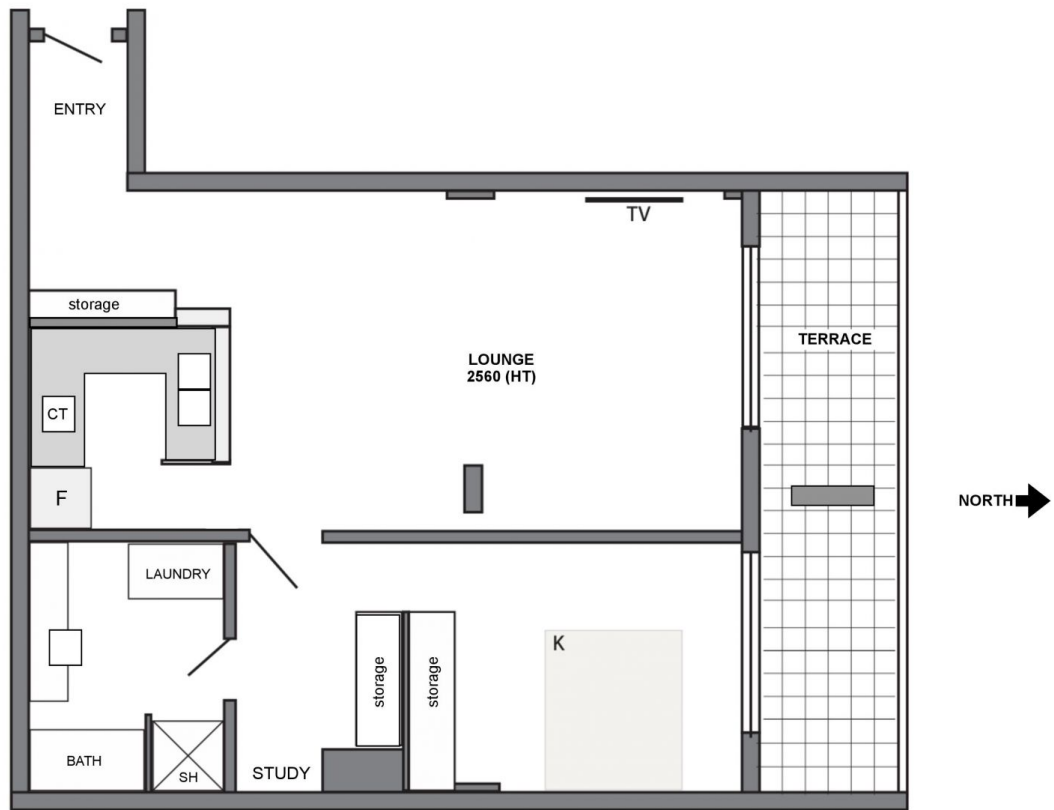
Overlooking the lush gardens of this luxury development, this single level unit is located on the third floor with a perfect northerly aspect. Enjoy the many facilities Moore Park gardens offers, including a 25M heated pool in resort style tropical setting, well equipped gym and sauna. This particular unit is unique as it has a double sized living area, separate study/dressing room adjoining the bedroom. Even the balcony is double sized with both the living area and bedroom opening out to it. If you're looking for a larger than average one bedroom, this will definitely suit you.

- ? Security building and parking with lift to your floor
- ? Private balcony running the full length of the unit
- ? Entry hallway opens into huge living and dining area
- ? Modern kitchen with dishwasher and Smeg gas stove
- ? Large bathroom with separate shower and bath
- ? Internal laundry with bi-fold doors and dryer fitted

View : <https://www.shearerproperty.com.au/lease/nsw/eastern-suburbs/redfern/residential/apartment/6939182>



Luke Mavromatis
02 9310 1801



APARTMENT C311

0 1 2 3 metres