



D908/780 Bourke Street Redfern NSW

1 1 1

Inspections by Appointment in line with Covid-19 Restrictions

Perched high on the 9th floor with a green, leafy background, this is one of the rare floorplan units that showcases a large master bedroom plus a smaller second bedroom/nursery or study and a lovely bright ambience from the numerous windows. Featuring floor to ceiling windows and a chic industrial edge, this unit is presented to perfection and well located adjacent to the Moore Park precinct.

- * Luxurious entrance foyer with security access to your floor
- * Large open plan living room with adjoining dining space
- * Modernised kitchen larger than most 2 bedroom units
- * Main bedroom with triple door translucent glass sliding

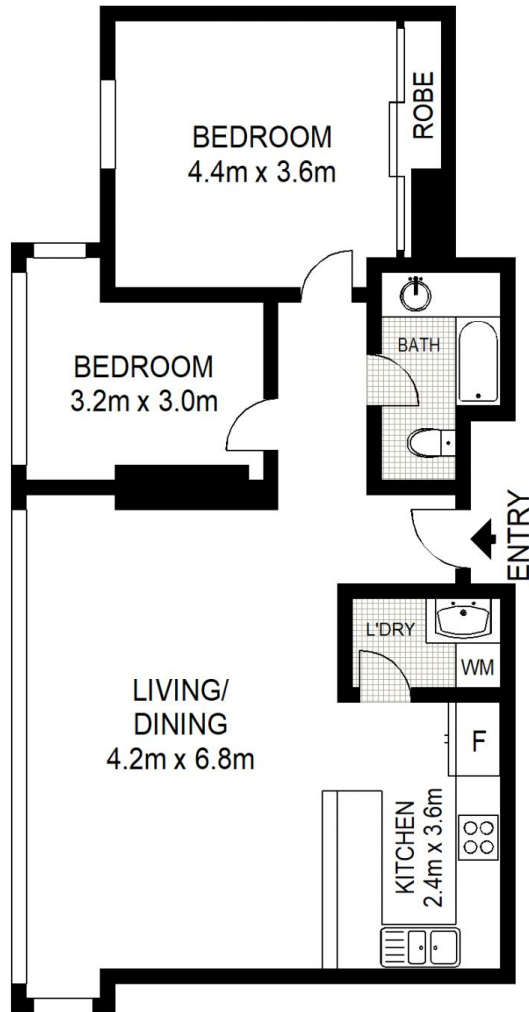
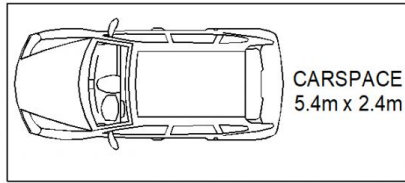
Price : \$ 820,000

View : <https://www.shearerproperty.com.au/sale/nsw/eastern-suburbs/redfern/residential/unit/6649980>



Sue Shearer
02 9310 1801

(NOT IN POSITION)



Scale shown in metres. All dimensions herein are approximate and gathered from sources believed to be reliable. Whilst every effort is made for the accuracy of our floor plans, interested parties should rely on their own enquiries.



D908/780 Bourke Street, Redfern

shearer
property