



## H422/780 Bourke Street Redfern NSW

1 1 1

This spacious, east facing, split level, one bedroom apartment occupies an elevated position overlooking the peaceful garden area of the Hopetoun building in the highly sought after Moore Park Gardens. With a generous 87sqm floor area, plus a car space, this is a fantastic apartment on offer.

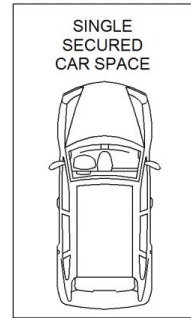
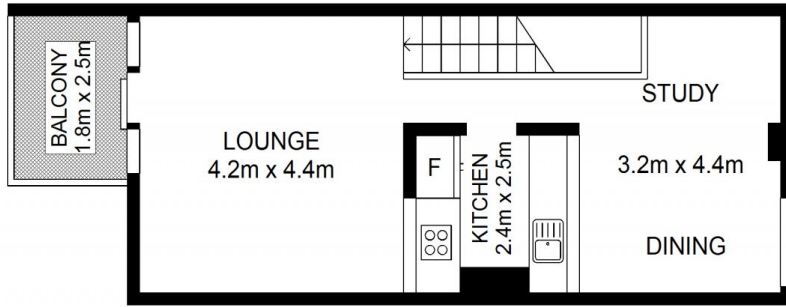
With a modern kitchen including a dishwasher and gas cook-top, additional features include dual balconies, secure parking, and resort style facilities including, a pool, gym, and sauna. Whilst having easy access to Moore Park recreational facilities as well as Centennial Park, it is also convenient to supermarkets as well as Danks Street and Crown Street culinary culture.

- Master bedroom with a private balcony and built ins.
- Kitchen with dishwasher and gas cooking

**Land Size** : 87 sqm  
**View** : <https://www.shearerproperty.com.au/lease/nsw/eastern-suburbs/redfern/residential/apartment/6014844>



**Luke Mavromatis**  
02 9310 1801



Scale shown in metres. All dimensions herein are approximate and gathered from sources believed to be reliable. Whilst every effort is made for the accuracy of our floor plans, interested parties should rely on their own enquiries. Floor Plans by Industrie Media | [industriemedia.tv](http://industriemedia.tv)



S1

H422/780 Bourke Street, Redfern