



## 37/7 Crystal Street Waterloo NSW

2  2  1 

Convenience plus! Located on the 7th level of the Tiara building, this two bedroom, two bathroom apartment is located close to supermarkets, pharmacy, restaurants, cafes & galleries. Set over two stunning levels including two balconies.

**View** : <https://www.shearerproperty.com.au/lease/nsw/eastern-suburbs/waterloo/residential/unit/5823738>

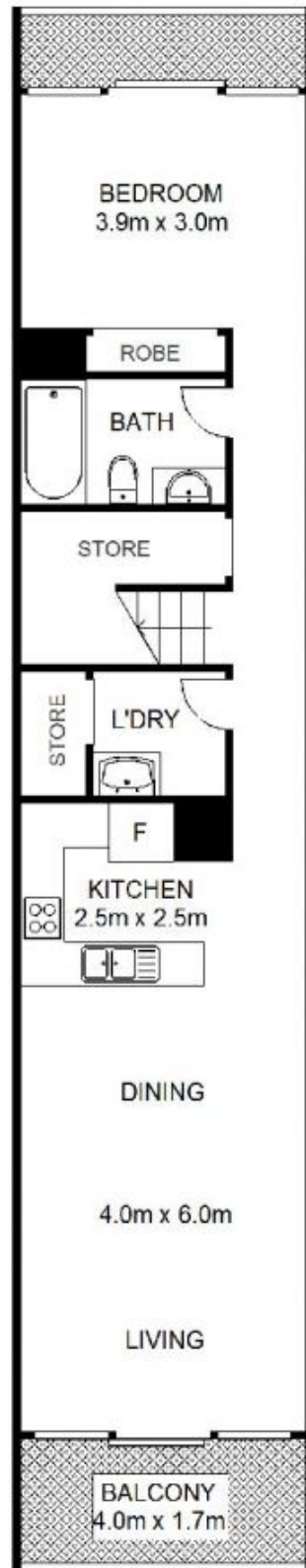
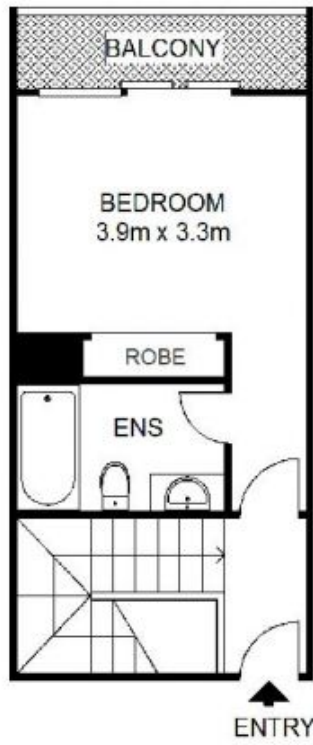
### Features include:

- \* Two bedrooms with built in robes
- \* Both bathrooms include a bath
- \* Open plan lounge/dining
- \* Modern kitchen with stainless steel appliances
- \* Internal Laundry
- \* Balcony off living and master bedroom
- \* Security building
- \* Access to pool, gym & sauna



**Luke Mavromatis**  
02 9310 1801

This apartment is just 10 minute drive from Sydney CBD.



Scale shown in metres. All dimensions herein are approximate and gathered from sources believed to be reliable. Whilst every effort is made for the accuracy of our floor plans, interested parties should rely on their own enquiries. Floor Plans by Industrie Media | [industriemedia.tv](http://industriemedia.tv)



S1

37/7 Crystal Avenue, Waterloo

**shearer**  
property