



G315/780 Bourke Street Redfern NSW

2 2 1

Beautifully presented throughout this two bedroom split level apartment in the Grosvenor building at Moore Park Gardens offers spacious living that flows to a spacious courtyard with a leafy outlook. Conveniently located within walking distance to Coles and Aldi shopping and Danks Street restaurants and cafes.

Land Size : 153 sqm
View : <https://www.shearerproperty.com.au/lease/nsw/eastern-suburbs/redfern/residential/apartment/5823737>

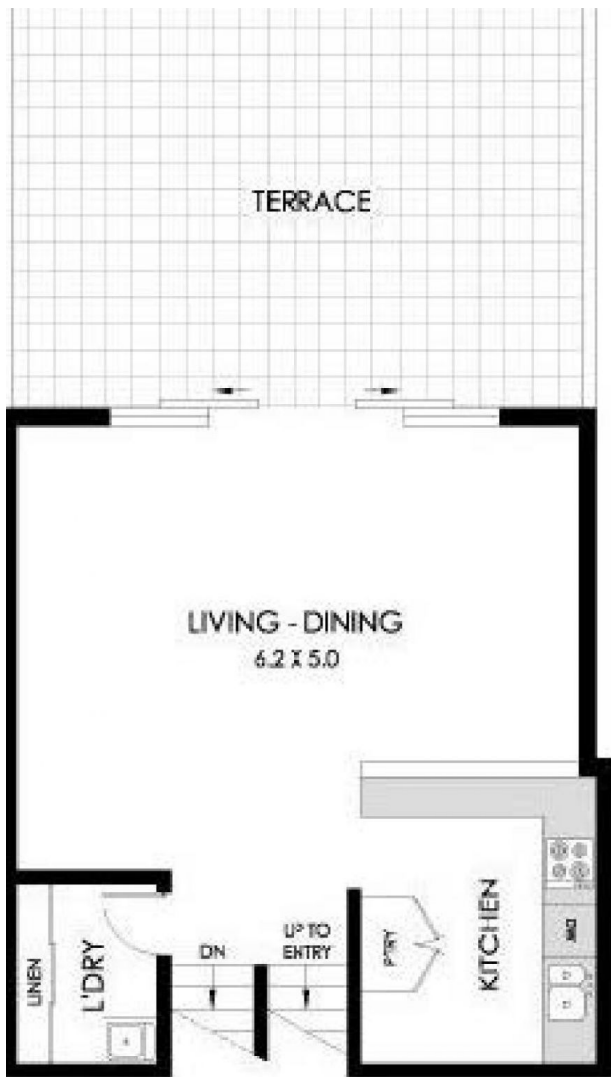
Features Include:

- Modern kitchen, dishwasher and gas cooking
- Large bedrooms both with built-in wardrobes
- Two contemporary bathrooms, ensuite with bath
- Two large private courtyards
- Secure parking space
- Swimming pool, gym, sauna

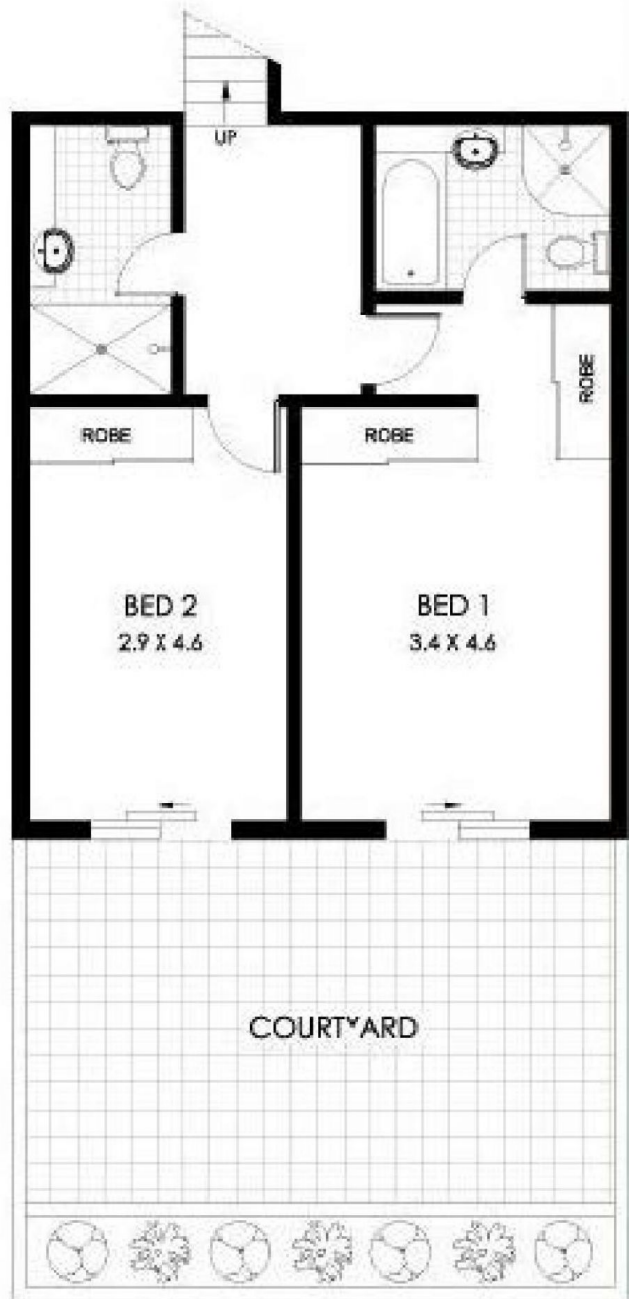
For more information please contact our Leasing Department on 0405 029 215 or our office on 02 9310



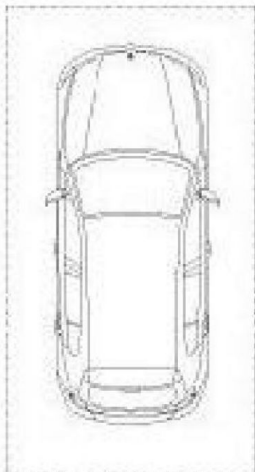
Luke Mavromatis
02 9310 1801



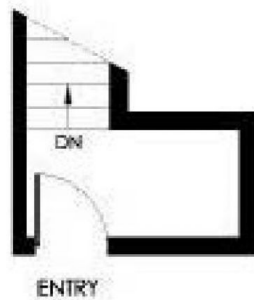
UPPER LEVEL



LOWER LEVEL



SECURITY CARSPACE



0 1 2 3 SCALE (METRES)

PLANS SHOWN ARE ONLY INDICATIVE OF LAYOUT. DIMENSIONS ARE APPROXIMATE

All information contained herein is gathered from sources we believe to be reliable, however we cannot guarantee its accuracy and interested persons should rely on their own enquiries. Dimensions are approximate.



G315/780 BOURKE STREET

REDFERN
Apartment Size: 153m²