



D2103/780 Bourke Street Redfern NSW

2 2 2

This fabulous apartment in the sought after Moore Park Gardens offers a 'blank canvas' just waiting to be renovated and styled. Original condition but with wonderful bones. Superb northerly views to the city and beyond.

View : <https://www.shearerproperty.com.au/sale/nsw/ea-stern-suburbs/redfern/residential/apartment/5823659>

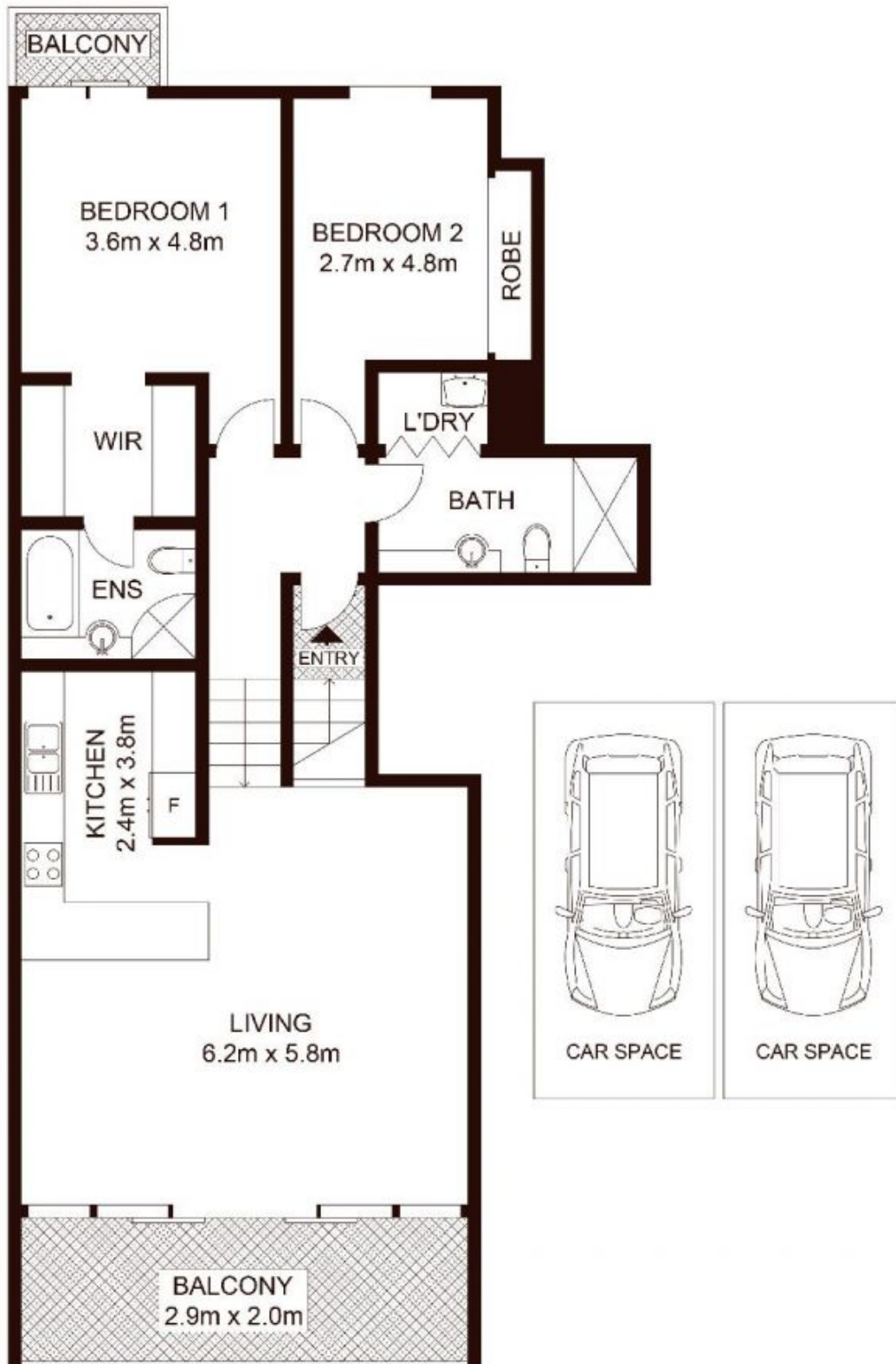
Features include:

- . 2 spacious bedrooms
- . built-ins in both bedrooms
- . Ideal split level design
- . Modern kitchen with gas cooking
- . Open plan living
- . Security car parking for two cars
- . Intercom & Security block
- . Facilities include heated pool, sauna and gym



Sue Shearer
02 9310 1801

This popular complex is in an ideal position not too far from the city and Surry Hills with all its restaurants and



Scale shown in metres. All dimensions herein are approximate and gathered from sources believed to be reliable. Whilst every effort is made for the accuracy of our floor plans, interested parties should rely on their own enquires. Floor Plans by Industrie Media. www.industriemedia.com.au

D2103/780 Bourke Street, Redfern

shearer
property