



**A708/780 Bourke Street Redfern NSW**

2 2 1

Beautiful presentation offered with this excellent two bedroom apartment situated on the 7th level of the popular 'Argyle' building in Moore Park Gardens. Ideal layout with bedrooms and bathrooms on either side of the living area. Excellent storage throughout plus a leafy outlook.

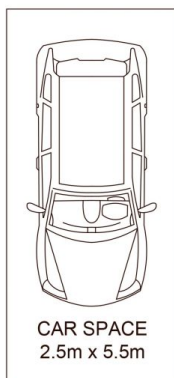
**View** : <https://www.shearerproperty.com.au/sale/nsw/ea-stern-suburbs/redfern/residential/apartment/5823654>

Features are:

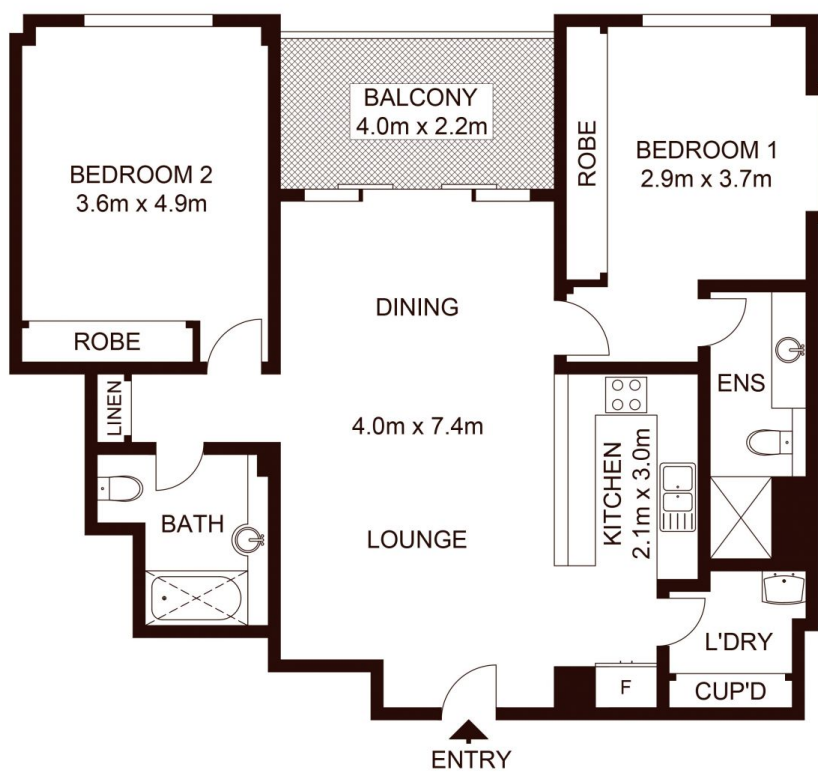
- . Spacious Living
- . Modern kitchen with gas cooking
- . Timber flooring
- . Carpets in the bedrooms
- . Recently painted throughout
- . Built-ins in both bedrooms
- . New blinds
- . Secure Parking with lift directly to floor
- . Manager and Security on site



**Sue Shearer**  
02 9310 1801



### LOWER LEVEL



### LEVEL 7



Scale shown in metres. All dimensions herein are approximate and gathered from sources believed to be reliable. Whilst every effort is made for the accuracy of our floor plans, interested parties should rely on their own enquires. Floor Plans by Industrie Media. [www.industriemedia.com.au](http://www.industriemedia.com.au)



780 Bourke Street, Redfern

**shearer**  
property