



208/320 Harris Street Pyrmont NSW

2 2 1

Situated in the sought after MCentral building this stylish two bedroom apartment has unique architectural detail with gorgeous raw concrete and exposed brick features for the ultimate inner city living.

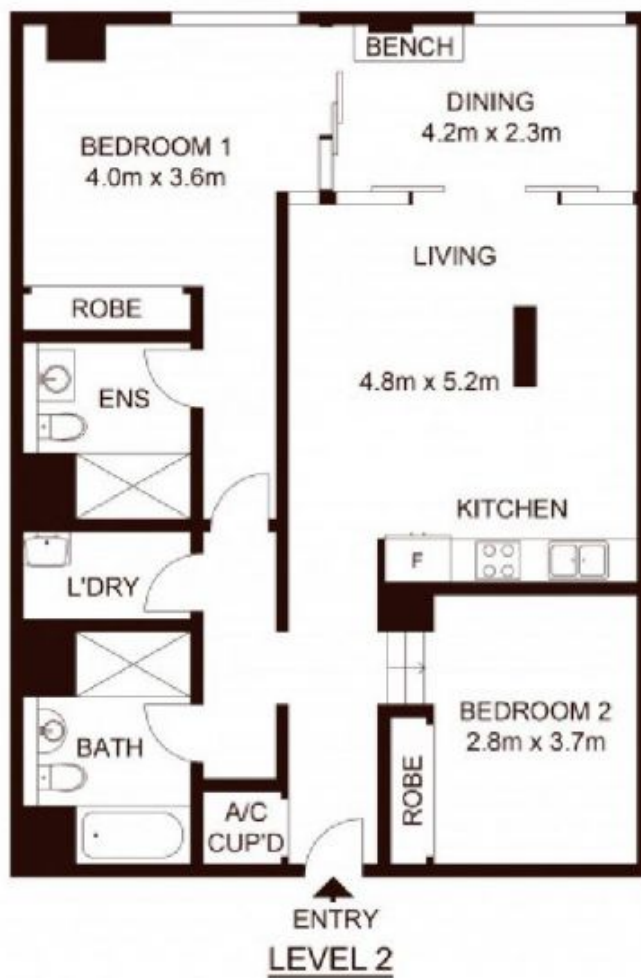
- Polished floorboards and high ceilings
- Exposed brick and raw concrete features
- Two generous bedrooms with built in wardrobes
- Modern kitchen and two bathrooms
- Internal laundry / air-conditioning
- Private car space on same level as apartment
- Private secure storage space in room on same level
- On-site building manager / security
- Award winning roof top garden (common area)

MCentral was once part of the Goldsbrough Wool Store and has been beautifully converted into modern apartment

Land Size : 107 sqm
View : <https://www.shearerproperty.com.au/sale/nsw/sydney-city/pyrmont/residential/apartment/5823640>



Sue Shearer
02 9310 1801



Scale shown in metres. All dimensions herein are approximate and gathered from sources believed to be reliable. Whilst every effort is made for the accuracy of our floor plans, interested parties should rely on their own enquires. Floor Plans by Industrie Media. www.industriemedia.com.au

208/320 Harris Street, Pyrmont



shearer
property