



H08/780 Bourke Street Redfern NSW

1 1 1

Privately positioned within the Hopetoun Building of the award winning 'Allen, Jack & Cottier' designed Moore Park Gardens complex, this immaculately presented, north facing, terrace style apartment offers an exceptionally stylish modern interior that spans over three levels.

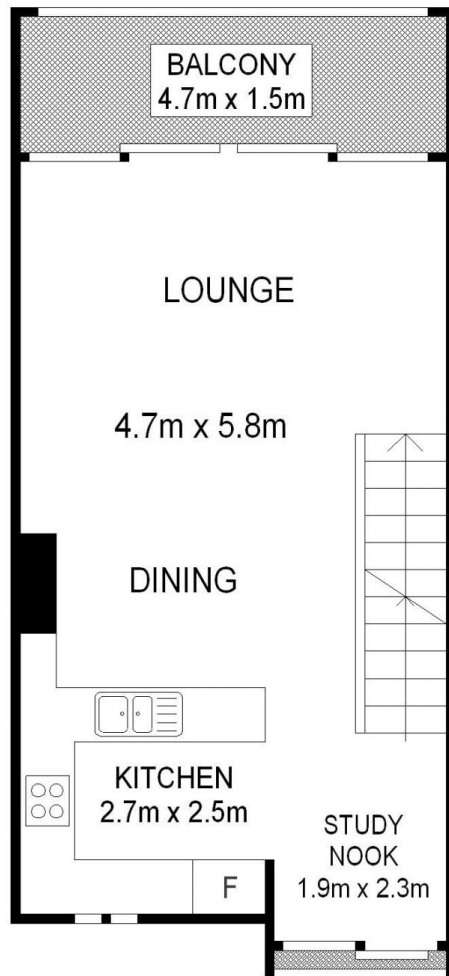
- *Split over three levels with stunning wooden floorboards
- *Brand new kitchen with stone benchtops
- *Large bedroom opening out to balcony with quiet leafy outlook
- *Sun drenched, private rooftop terrace
- *Huge lock up garage, can also be used for storage

Facilities in the complex include a fully-equipped gymnasium with sauna, resort style 25m outdoor heated pool and 24 hour security with building management on site. It is only a short stroll to Danks Street, Surry Hills,

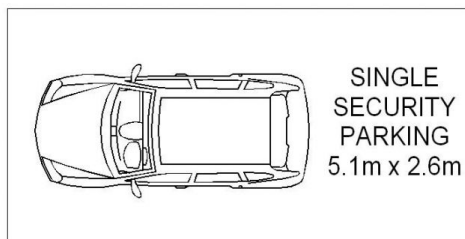
Land Size : 127 sqm
View : <https://www.shearerproperty.com.au/sale/nsw/eastern-suburbs/redfern/residential/apartment/5823636>



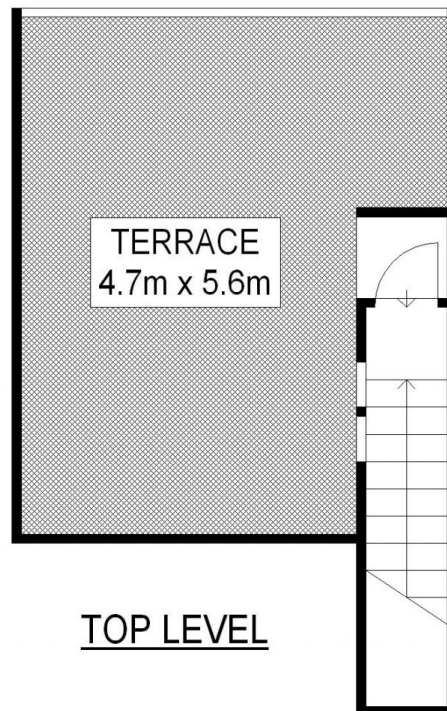
Sue Shearer
02 9310 1801



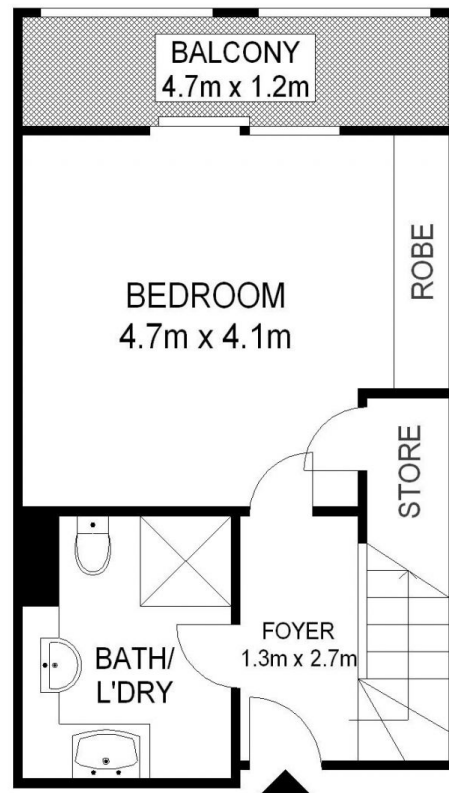
LEVEL THREE



BASEMENT



TOP LEVEL



LEVEL TWO

H08/780 Bourke Street, Redfern

0 5 M



S1

All dimensions herein are approximate and gathered from sources believed to be reliable. Whilst every effort is made for the accuracy of our floor plans, interested parties should rely on their own enquires. Scale shown in metres. Floor Plans by Industrie Media. 1300 505 539 _ WWW.INDUSTRIEMEDIA.COM.AU

INDUSTRIE MEDIA