



C306/6-8 Crescent Street Redfern NSW

1 1 1

Set within the Caley Building at Moore Park Gardens this fantastic one bedroom apartment is split level and opens out to a lovely private courtyard surrounded lush gardens.

- *Generous open plan living & dining flowing out to courtyard
- *Modern kitchen with stone benchtops & quality appliances
- *Large bedroom with built-ins
- *Onsite security & building management
- *Total area of 88sqm including car space

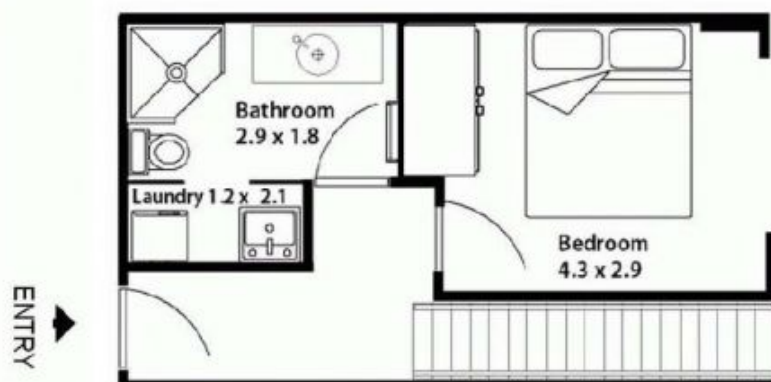
The desired Moore Park Gardens complex is well positioned being close to Sydney's CBD and hip Surry Hills, walking distance to Centennial Parklands, across from Moore Park Golf Club and around the corner from the local supermarkets and popular Danks Street. Facilities in the complex include pool, gym and sauna.

View : <https://www.shearerproperty.com.au/sale/nsw/ea-stern-suburbs/redfern/residential/apartment/5823634>

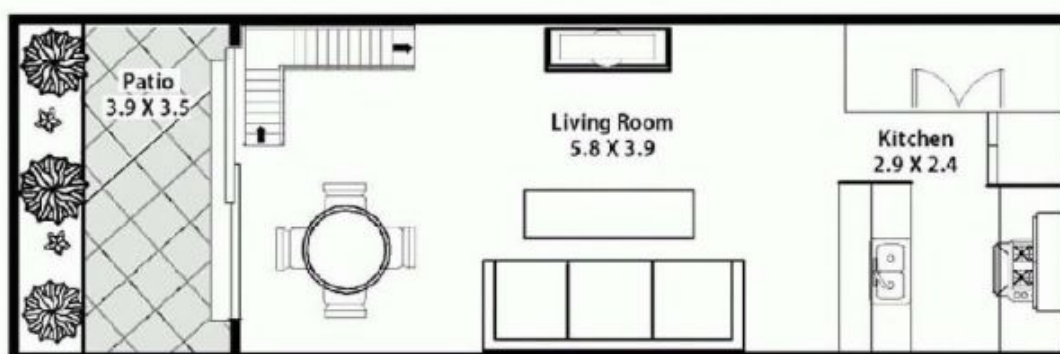


Sue Shearer
02 9310 1801

For Sale C306/6-8 Crescent Street, Redfern



LEVEL THREE



ENTRY LEVEL



BASEMENT

C306/6-8 Crescent Street, Redfern

FLOOR PLAN BY WATERLOO PICTURES PH: 042 058 2449

The information contained within has been provided by our Principal and Third parties, which we merely pass on without any representations or Warranty given, intended or implied by its correctness and with no Liability accepted by us in this regard, you must rely on your own inquiries as to its accuracy or otherwise.

shearer
property