



L507/780 Bourke Street Redfern NSW

2 1 2

Spanning over two levels this stylish apartment is perfectly laid out with a generous kitchen and living area flowing out to a private north facing balcony.

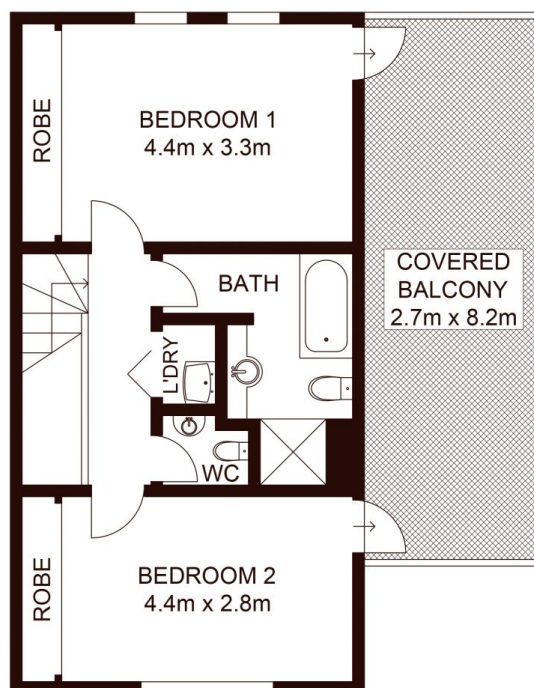
- *Separate living and dining areas on lower level
- *Two double bedrooms with built in robes
- *Large bathroom with separate bath and shower plus additional WC
- *Internal laundry with dryer
- *Large private courtyard on upper level
- *Secure tandem carspace
- *On-site building management and security

The desired Moore Park Gardens complex is well positioned being close to Sydney's CBD and hip Surry Hills, walking distance to Centennial Parklands, across from Moore Park Golf Club and around the corner from the

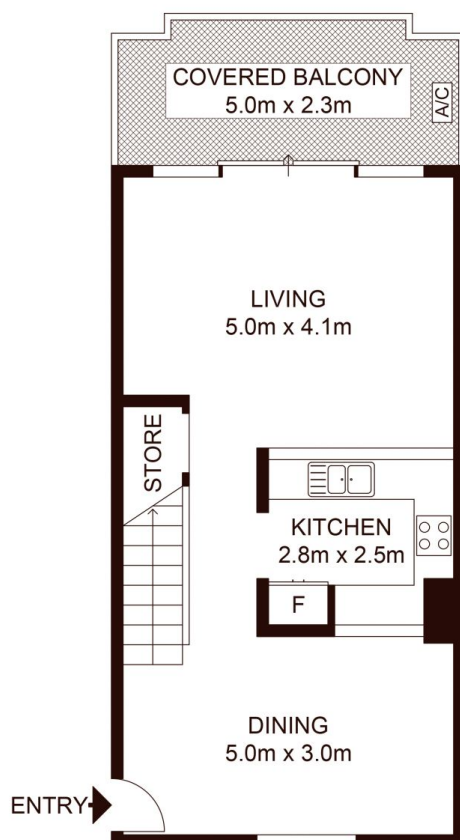
Land Size : 159 sqm
View : <https://www.shearerproperty.com.au/sale/nsw/eastern-suburbs/redfern/residential/apartment/5823629>



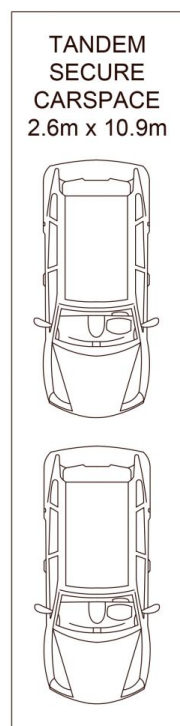
Sue Shearer
02 9310 1801



TOP LEVEL



LEVEL 5



LOWER GROUND LEVEL



Scale shown in metres. All dimensions herein are approximate and gathered from sources believed to be reliable. Whilst every effort is made for the accuracy of our floor plans, interested parties should rely on their own enquires. Floor Plans by Industrie Media. www.industriemedia.com.au

L507/780 Bourke Street, Redfern

shearer
property