



416/320 Harris Street Pyrmont NSW

2  2  1 

Located in the sought after MCentral Building this New York style apartment offers a generous open plan layout over two levels with unique architecture detail for the ultimate inner city living.

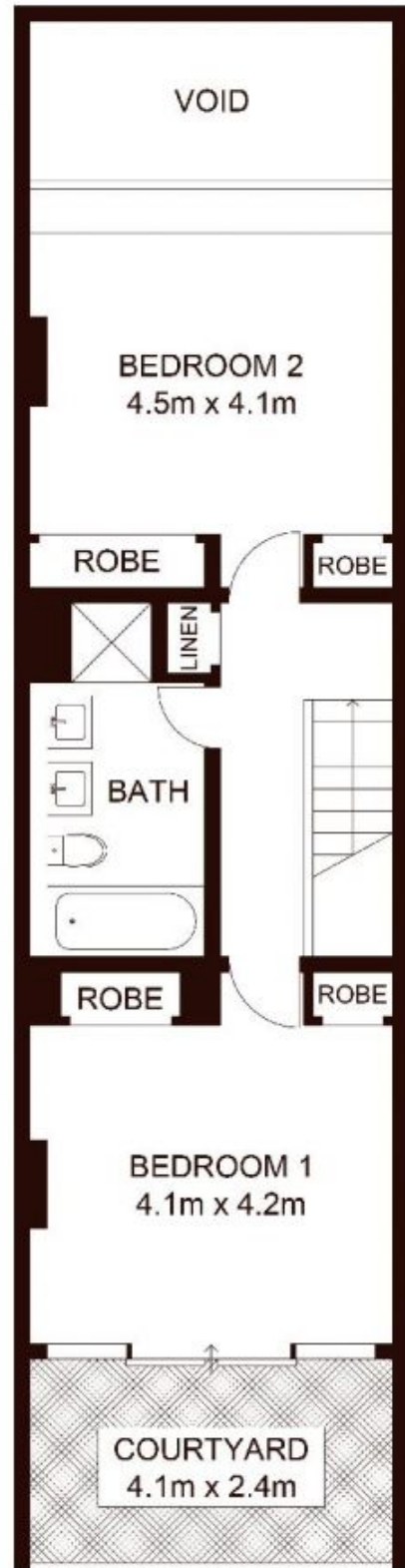
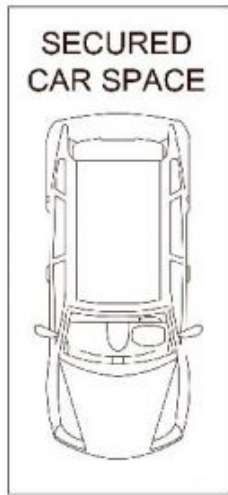
View : <https://www.shearerproperty.com.au/sale/nsw/sydney-city/pyrmont/residential/unit/5823628>

- Polished floorboards, high ceilings and original windows
- Gourmet gas kitchen with quality stainless appliances
- Main bedroom with glass doors flowing to private courtyard
- Loft style second bedroom with built-in study desk
- Separate individual lock up storage
- Enclosed garage on same level as the apartment
- On-site building manager / security
- Award winning roof top garden (common area)



Sue Shearer
02 9310 1801

MCentral was once part of the Goldsbrough Wool Store and has been beautifully converted into modern apartment



Scale shown in metres. All dimensions herein are approximate and gathered from sources believed to be reliable. Whilst every effort is made for the accuracy of our floor plans, interested parties should rely on their own enquires. Floor Plans by Industrie Media. www.industriemedia.com.au

416/320 Harris Street, Pyrmont

shearer
property