



H102/780 Bourke Street Redfern NSW

1 1 1

This great one bedroom apartment spanning over two levels located in the Hopetoun Building at Moore Park Gardens is just waiting for the personal touch.

- Dual aspect living space opening to two outdoor areas
- Spacious one bedroom opening to its own terrace
- Direct private entrance from street level
- Access to secure car space directly from the apartment
- Total size is 111sqm including carspace
- On site building management and security

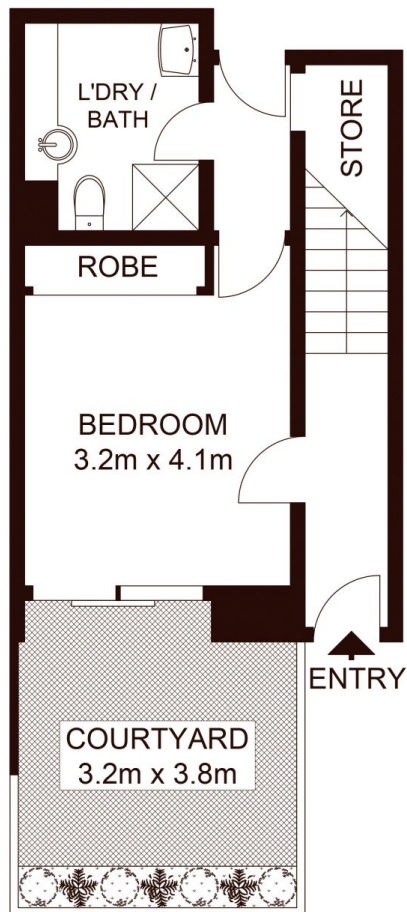
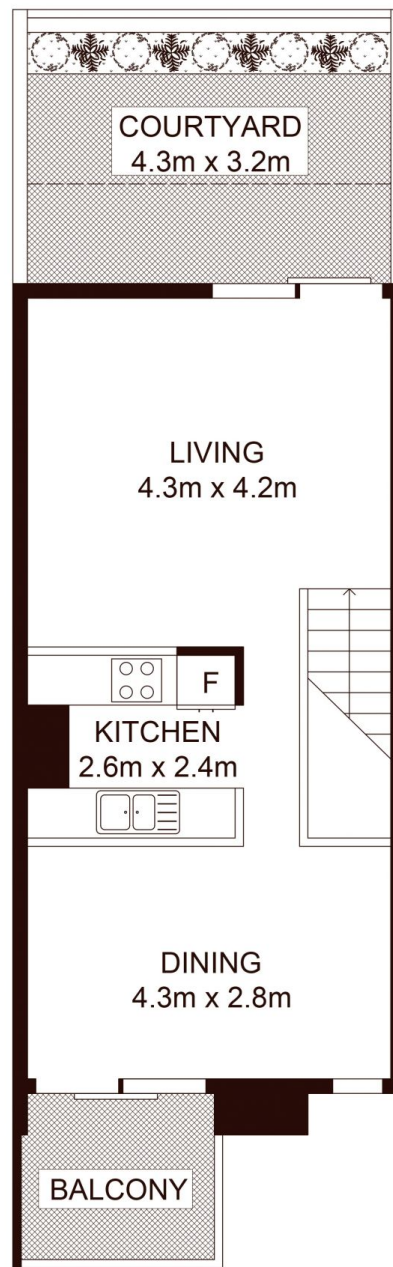
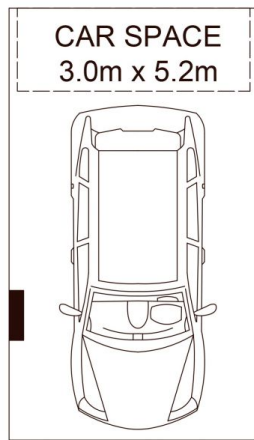
The desired Moore Park Gardens complex is well positioned being close to Sydney's CBD and hip Surry Hills, walking distance to Centennial Parklands, across from Moore Park Golf Club and around the corner from the local supermarkets and popular Danks Street. Facilities in the complex include pool, gym and sauna.

Land Size : 111 sqm
View : <https://www.shearerproperty.com.au/sale/nsw/eastern-suburbs/redfern/residential/apartment/5823626>



Sue Shearer
02 9310 1801

STORAGE
CAGE
ABOVE CAR SPACE



GROUND FLOOR

FIRST FLOOR



Scale shown in metres. All dimensions herein are approximate and gathered from sources believed to be reliable. Whilst every effort is made for the accuracy of our floor plans, interested parties should rely on their own enquires. Floor Plans by Industrie Media. www.industriemedia.com.au

H102/780 Bourke Street, Redfern

shearer
property