

## 106/320 Harris Street Pyrmont NSW

2 1

Situated in the sought after MCentral building, this two bedroom apartment has unique architectural detail and is perfectly positioned close to Sydney's CBD.

**Land Size** : 78 sqm  
**View** : <https://www.shearerproperty.com.au/sale/nsw/sydney-city/pyrmont/residential/apartment/5823621>

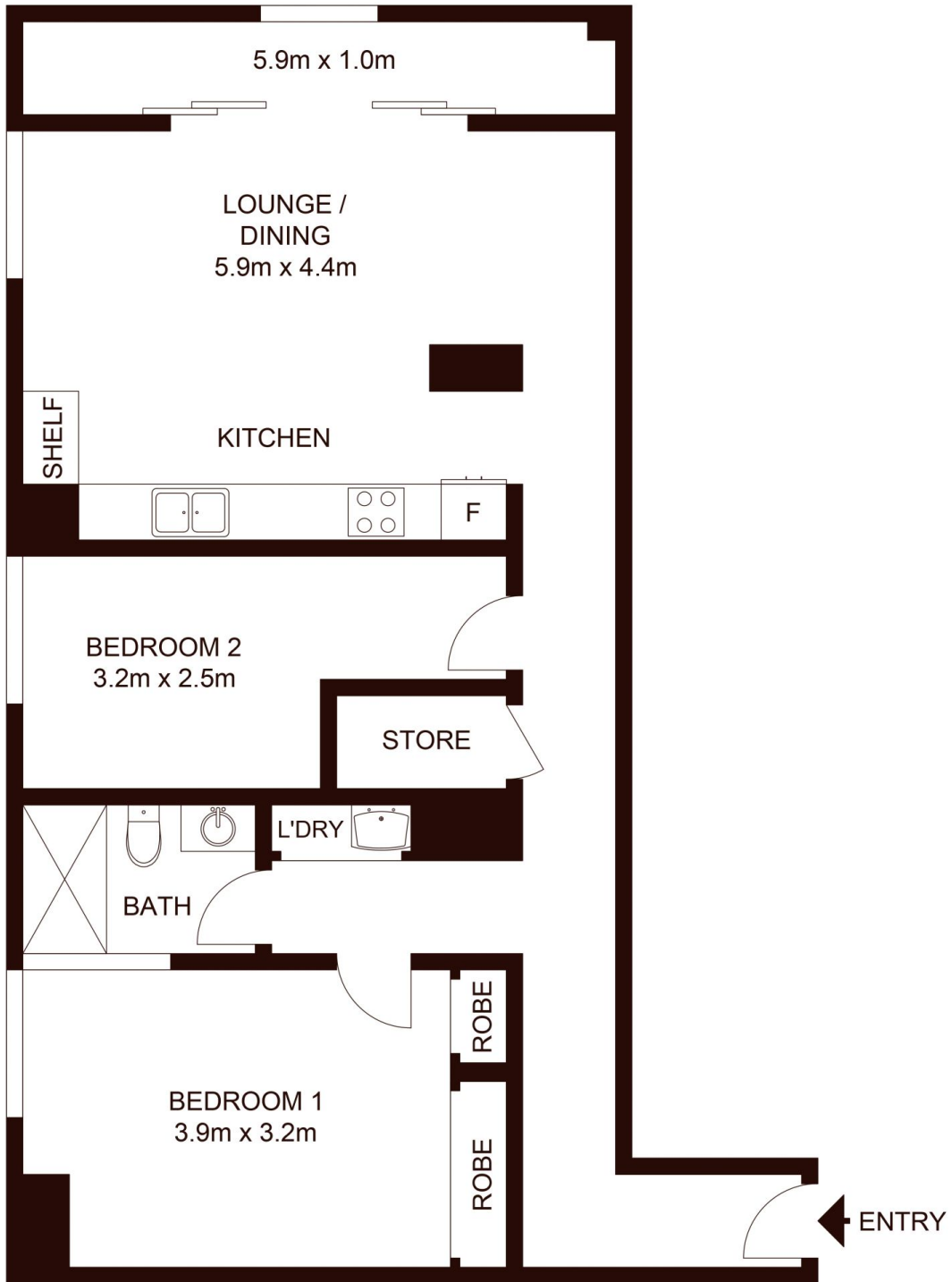
### Features Include:

- Polished floorboards and high ceilings in true warehouse conversion style
- Main bedroom with generous built in wardrobes
- Separate Internal laundry
- On-site building manager / security
- Award winning roof top garden (common area)
- Car Spaces available for purchase separately

MCentral was once part of the Goldsbrough Wool Store and has been beautifully converted into modern apartment living. It is conveniently located in trendy Pyrmont and within minutes to Darling Harbour, both offering an array of



**Sue Shearer**  
**02 9310 1801**



Scale shown in metres. All dimensions herein are approximate and gathered from sources believed to be reliable. Whilst every effort is made for the accuracy of our floor plans, interested parties should rely on their own enquires. Floor Plans by Industrie Media. [www.industriemedia.com.au](http://www.industriemedia.com.au)

106/320 Harris Street, Pyrmont

**shearer**  
property