



**112/320 Harris Street Pyrmont NSW**

2 2 1

Situated in the sought after MCentral building, this two bedroom apartment has unique architectural detail and fuses an imaginative use of space for ultra modern inner city living.

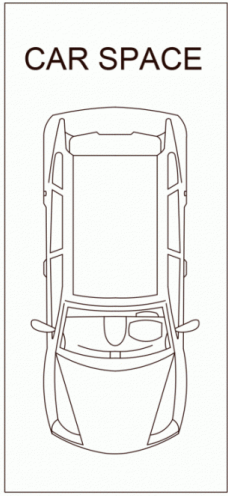
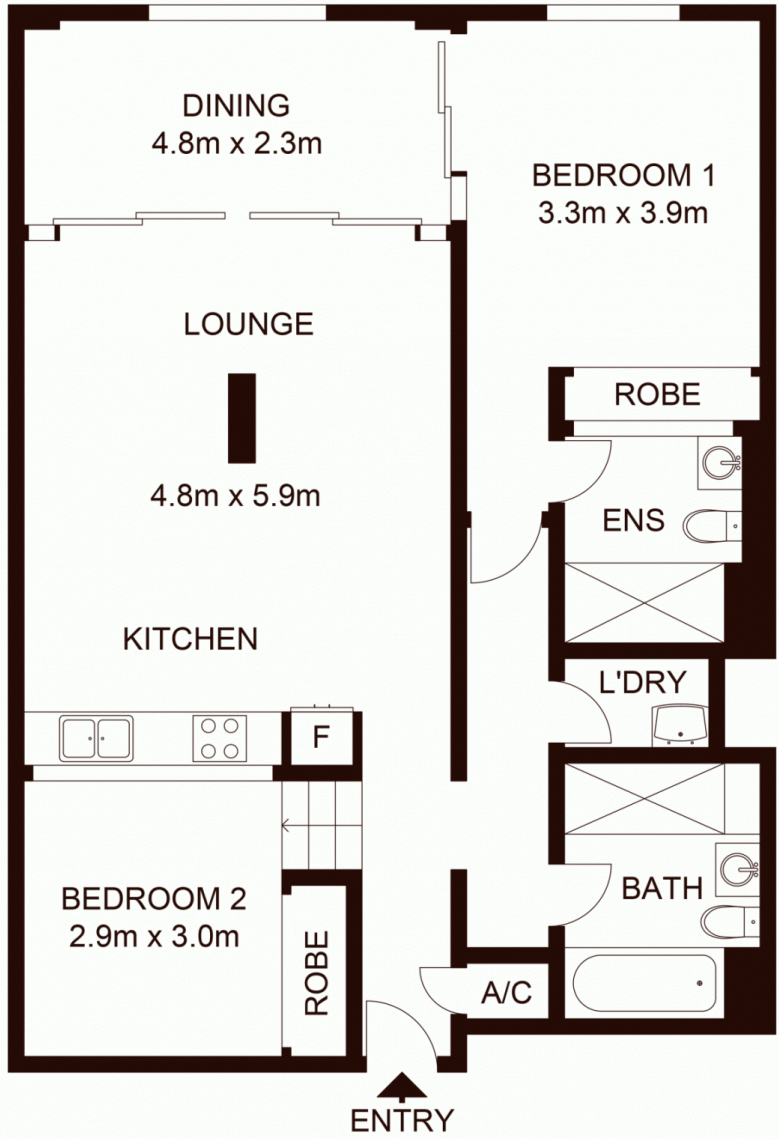
- Polished floorboards and high ceilings
- Exposed brick and raw concrete features
- Two generous bedrooms with built in wardrobes
- Modern kitchen and two bathrooms
- Internal laundry / air-conditioning
- Private car space on same level as apartment
- On-site building manager / security
- Award winning roof top garden (common area)

MCentral was once part of the Goldsbrough Wool Store and has been beautifully converted into modern apartment living. It is conveniently located in trendy Pyrmont and

**Land Size** : 106 sqm  
**View** : <https://www.shearerproperty.com.au/sale/nsw/sydney-city/pyrmont/residential/apartment/5823619>



**Sue Shearer**  
**02 9310 1801**



Scale shown in metres. All dimensions herein are approximate and gathered from sources believed to be reliable. Whilst every effort is made for the accuracy of our floor plans, interested parties should rely on their own enquires. Floor Plans by Industrie Media. [www.industriemedia.com.au](http://www.industriemedia.com.au)

112/320 Harris Street, Pyrmont

