



G608/780 Bourke Street Redfern NSW

1 1 1

Located in the Grosvenor Building at Moore Park Gardens this one bedroom apartment has the ideal layout for taking advantage of its elevated position facing to the north.

Features include:

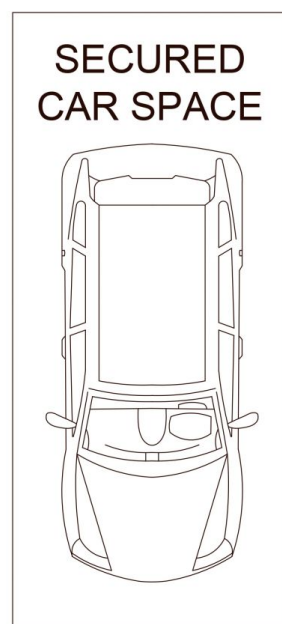
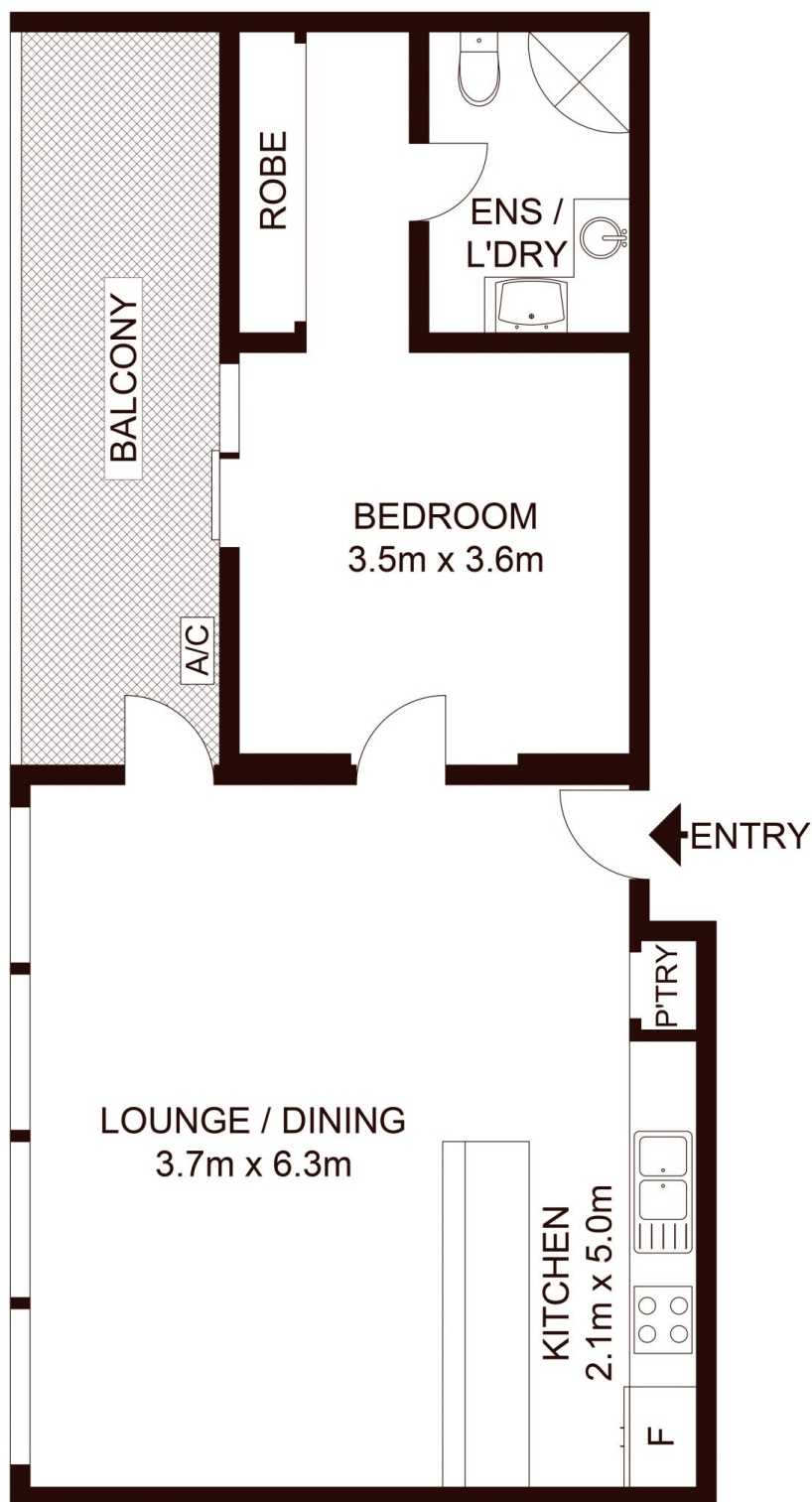
- Open plan living living, dining and kitchen with floor to ceiling windows
- Private sunny balcony with access from both bedroom and living area
- Great sized bedroom and built ins
- Tidy bathroom with internal laundry
- Secure undercover car space
- On site building management and security

The desired Moore Park Gardens complex is well positioned being close to Sydney's CBD and hip Surry Hills, walking distance to Centennial Parklands, across

View : <https://www.shearerproperty.com.au/sale/nsw/eastern-suburbs/redfern/residential/apartment/5823616>



Sue Shearer
02 9310 1801



Scale shown in metres. All dimensions herein are approximate and gathered from sources believed to be reliable. Whilst every effort is made for the accuracy of our floor plans, interested parties should rely on their own enquires. Floor Plans by Industrie Media. www.industriemedia.com.au

G608/780 Bourke Street, Redfern

shearer
property