



## W4/780 Bourke Street Redfern NSW

1 1 1

Spacious one bedroom apartment in the Waverley Building at Moore Park Gardens. This east facing light filled apartment has a generous floor plan at 141sqm with open plan kitchen, dining & lounge room, an over-sized bedroom with built ins, bathroom with separate bath & shower and internal laundry with storage.

### Features include:

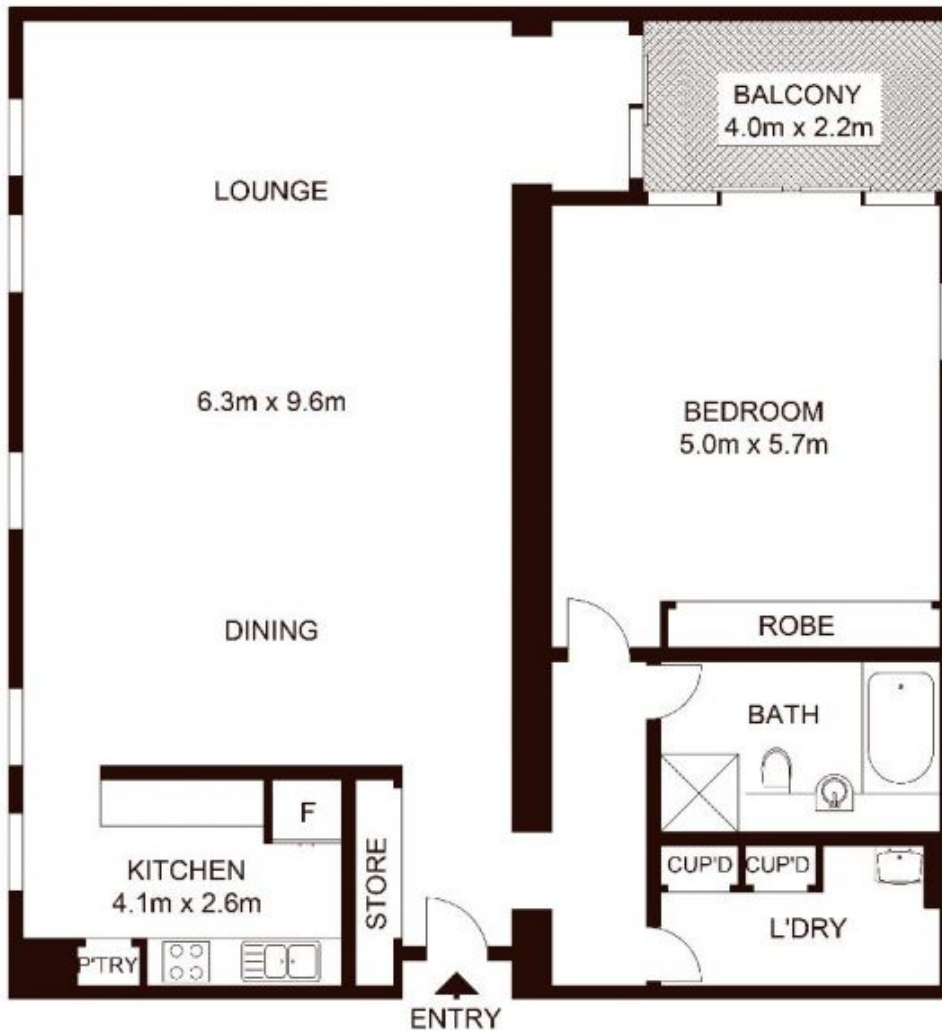
- Spacious open plan living and dining with beautiful arched windows
- Large bedroom with built in wardrobe
- Private balcony overlooking the common pool area
- Large modern bathroom with separate bath and shower
- Internal laundry room with storage
- Secure undercover car space
- On site building management and security

**Land Size** : 156 sqm

**View** : <https://www.shearerproperty.com.au/sale/nsw/eastern-suburbs/redfern/residential/apartment/5823615>



**Sue Shearer**  
02 9310 1801



Scale shown in metres. All dimensions herein are approximate and gathered from sources believed to be reliable. Whilst every effort is made for the accuracy of our floor plans, interested parties should rely on their own enquires. Floor Plans by Industrie Media. [www.industriemedia.com.au](http://www.industriemedia.com.au)



W4/780 Bourke Street, Redfern

**shearer**  
property