



**204/320 Harris Street Pyrmont NSW**

1 1 1

Situated in the sought after MCentral building, this light filled north facing apartment has unique architectural detail and is perfectly positioned close to Sydney's CBD.

**View** : <https://www.shearerproperty.com.au/sale/nsw/sydney-city/pyrmont/residential/unit/5823613>

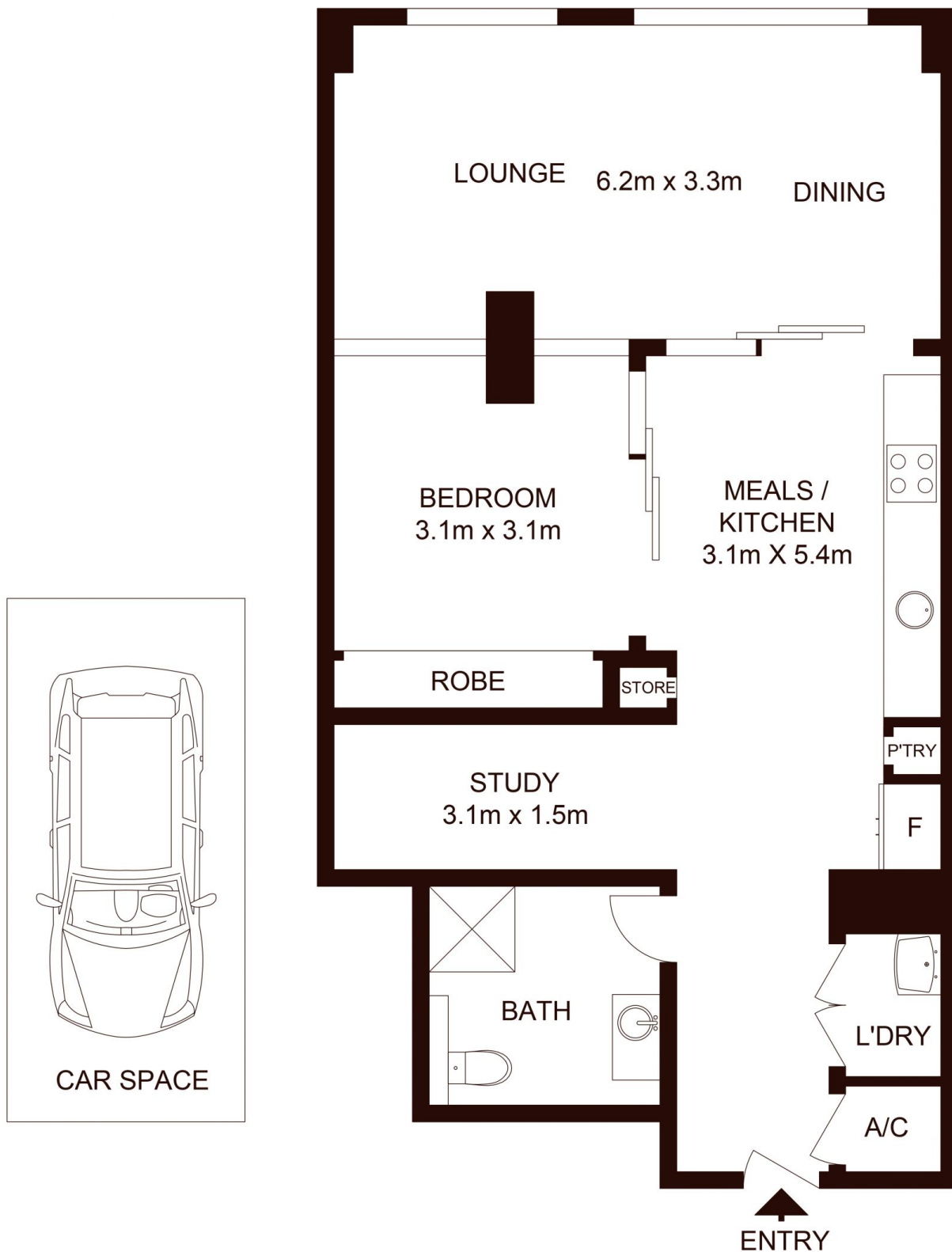
Features Include:

- Polished floorboards and high ceilings in true warehouse conversion style
- Main bedroom with generous built in wardrobes
- Study / 2nd small bedroom
- Modern kitchen and bathroom
- Internal laundry / air-conditioning
- Private car space on same level as apartment
- On-site building manager / security
- Award winning roof top garden (common area)



**Sue Shearer**  
**02 9310 1801**

MCentral was once part of the Goldsbrough Wool Store



Scale shown in metres. All dimensions herein are approximate and gathered from sources believed to be reliable. Whilst every effort is made for the accuracy of our floor plans, interested parties should rely on their own enquires. Floor Plans by Industrie Media. [www.industriemedia.com.au](http://www.industriemedia.com.au)

Unit 204/320 Harris Street, Pyrmont

**shearer**  
property