



## 2/1 Maddison Street Redfern NSW

3 2 2

Semi sized unit situated in the fast growing inner-city precinct of Redfern. This spacious three level residence is set on the northeast corner of the complex and is full of charm boasting two separate living areas, an entertainer's wet bar, three bedrooms and lots of indoor/outdoor space.

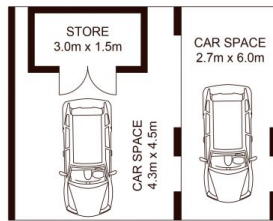
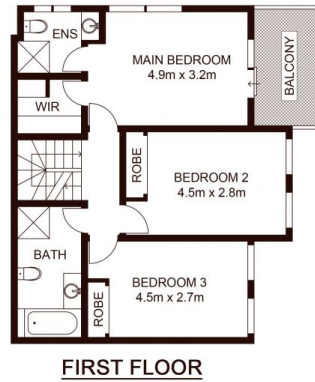
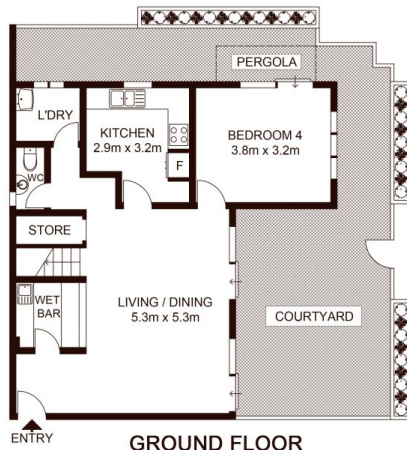
This 310sqm home has the main living on the ground floor with sun lit kitchen and separate formal dining, a wraparound garden courtyard, internal laundry and extra storage space. The three bedrooms are situated on the second floor all with built-ins including a master suite with walk-in robe and it's own balcony. Another spacious living area is situated above with a private wraparound terrace perfect for entertaining.

The property is well positioned being close to the CBD and hip Surry Hills, walking distance to Centennial Parklands,

**Land Size** : 310 sqm  
**View** : <https://www.shearerproperty.com.au/sale/nsw/eastern-suburbs/redfern/residential/unit/5823608>



**Sue Shearer**  
**02 9310 1801**



Scale shown in metres. All dimensions herein are approximate and gathered from sources believed to be reliable. Whilst every effort is made for the accuracy of our floor plans, interested parties should rely on their own enquiries. Floor Plans by Industrie Media | [industriemedia.tv](http://industriemedia.tv)

Unit 2/1 Maddison Street, Redfern

