



R404/780 Bourke Street Redfern NSW

1 1 1

With an abundance of natural light, this north-facing, elevated apartment is in the Reckitts building of Moore Park Gardens. The open plan 67sqm floor area including car space provides a perfect balance of lifestyle, privacy and convenience. An exceptional investment or first home in a vibrant inner city location.

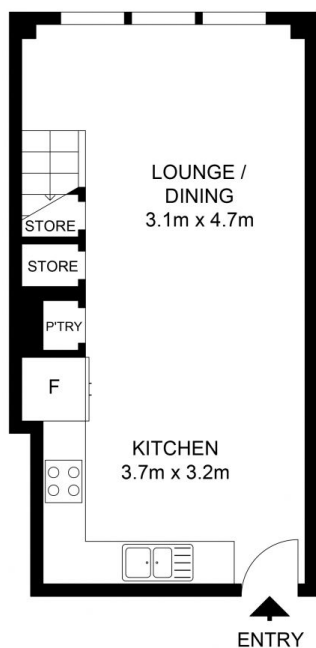
Modern kitchen with dishwasher and gas cook top. Secure parking and resort-style facilities including a 25m pool, gym and sauna. Perfectly positioned in an award-winning complex. Short stroll to Danks Street and Crown Street restaurants, cafes and bars.

- Contemporary open plan living and dining area
- Bedroom with ensuite and built-in wardrobe
- Internal laundry, storage space under stairs
- Smeg kitchen with gas cooking

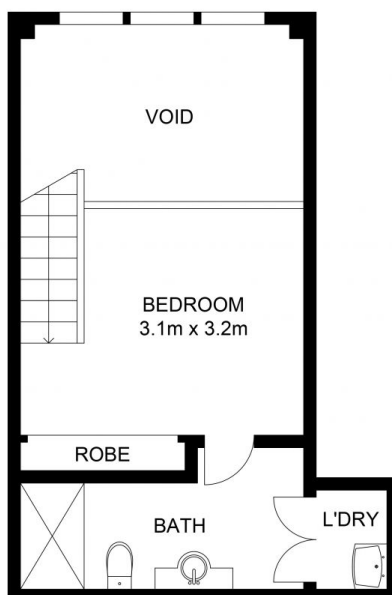
View : <https://www.shearerproperty.com.au/sale/nsw/ea-stern-suburbs/redfern/residential/apartment/5823596>



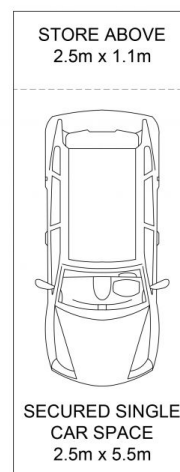
Sue Shearer
02 9310 1801



ENTRY FLOOR (LEVEL 4)



UPPER FLOOR



UPPER GROUND FLOOR



Scale shown in metres. All dimensions herein are approximate and gathered from sources believed to be reliable. Whilst every effort is made for the accuracy of our floor plans, interested parties should rely on their own enquiries. Floor Plans by Industrie Media | industriemedia.tv



R404/780 Bourke Street, Redfern

shearer
property