



## H212/780 Bourke Street Redfern NSW

1  1  1 

This bright, well proportioned, north facing, split level one bedroom apartment occupies a leafy elevated setting in the Hopetoun building of Moore Park Gardens. With a generous 99sqm floor area, including a private garage, this property epitomizes low maintenance modern living at its best.

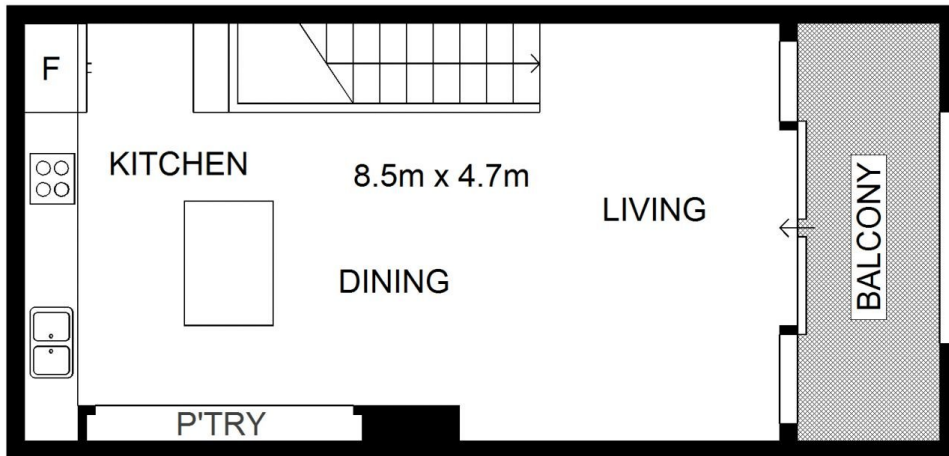
With a new gourmet kitchen including Caesar Stone benchtops, a dishwasher and gas cook-top, additional features of the property include polished floorboards, dual balconies, secure parking, and resort style facilities including, a pool, gym, and sauna.

An award winning community, it is no more than a stroll to Danks Street and Crown Street culinary culture. This property represents an exceptional investment, or prime opportunity for the professional couple to enter a prestige

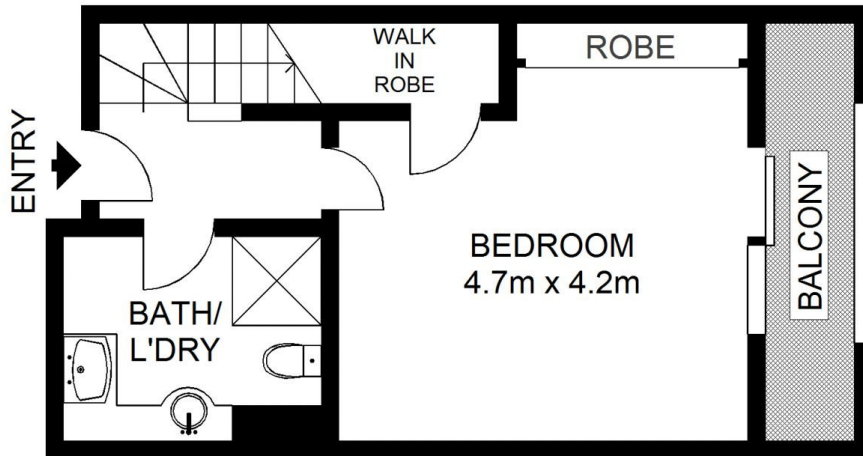
**Land Size** : 99 sqm  
**View** : <https://www.shearerproperty.com.au/sale/nsw/eastern-suburbs/redfern/residential/apartment/5823595>



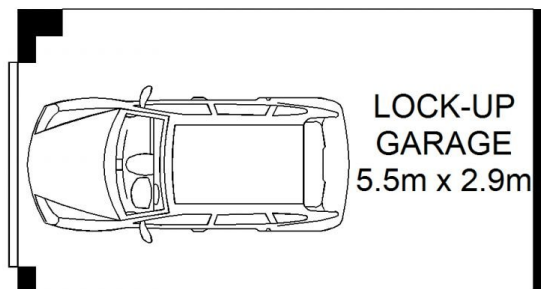
**Sue Shearer**  
02 9310 1801



UPPER LEVEL



LEVEL TWO



# H212/780 Bourke, Street Shearer

Not to scale • All measurements are approximate • Drawn for marketing purposes only • Floorplan by © Industrie Media

