



C414/6-8 Crescent Street Redfern NSW

1 1 1

Bright, stylish and well configured, this exceptional 77sqm (incl. car space) north facing single level corner apartment is positioned in the heart of the exclusive Moore Park Gardens complex. This unique property epitomizes low maintenance modern living at its best.

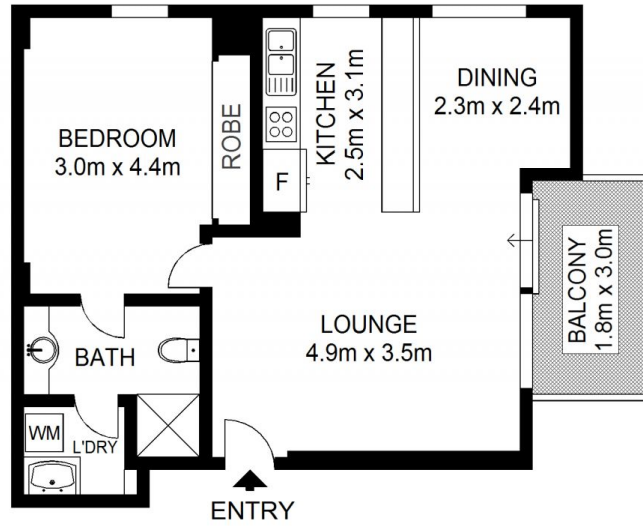
Set up for ease of use, the kitchen has gas appliances and opens to the lounge and dining area which flows through sliding glass doors to a spacious balcony ideal for casual alfresco entertaining with friends. The master bedroom has built-in wardrobes and there is also a laundry for added convenience. This property is a must for the first home buyer or astute investor.

- Resort style facilities including a pool, gym, and sauna
- Stunning landscaped grounds
- On-site building manager

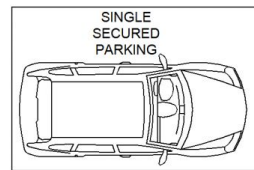
Land Size : 77 sqm
View : <https://www.shearerproperty.com.au/sale/nsw/eastern-suburbs/redfern/residential/apartment/5823594>



Sue Shearer
02 9310 1801



LEVEL FOUR



BASEMENT



Scale shown in metres. All dimensions herein are approximate and gathered from sources believed to be reliable. Whilst every effort is made for the accuracy of our floor plans, interested parties should rely on their own enquiries. Floor Plans by Industrie Media | industriemedia.tv

S1

C414/780 Bourke Street, Redfern