



B803/780 Bourke Street Redfern NSW

2 2 1

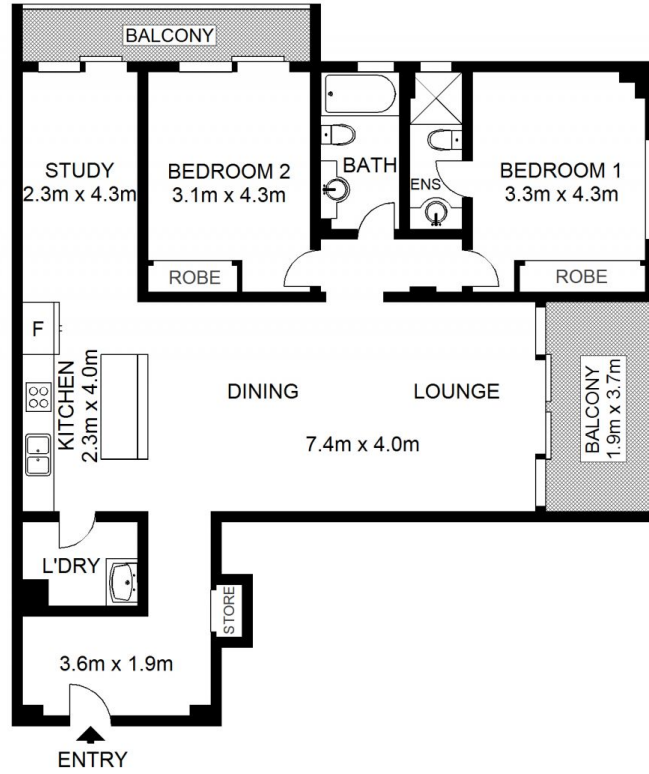
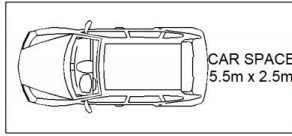
Bathed in light, this exceptional elevated corner apartment offers a lifestyle of undeniable quality in the exclusive heart of the renowned Moore Park Gardens. Finished with contemporary appointments throughout, and opening to embrace sweeping city views, this residence is spacious and well configured. With a total area of 133sqm (incl. car space) on title, this apartment is designed for easy modern living.

An expansive living area that opens through sliding glass doors to a balcony, and the view beyond is framed with plantation shutters. There is also a separate dining room with balcony that could be enclosed as a study or child's bedroom should the need arise. The recently renovated large open galley kitchen, has stone benches and stainless steel gas appliances. Both bedrooms are with built-ins, with the master also claiming an en-suite. Well maintained and

Land Size : 133 sqm
View : <https://www.shearerproperty.com.au/sale/nsw/eastern-suburbs/redfern/residential/apartment/5823588>



Sue Shearer
02 9310 1801



Scale shown in metres. All dimensions herein are approximate and gathered from sources believed to be reliable. Whilst every effort is made for the accuracy of our floor plans, interested parties should rely on their own enquiries. Floor Plans by Industrie Media | industriemedia.tv



S1

B803/780 Bourke Street, Redfern

shearer
property