



405/380 Harris Street Pyrmont NSW

1 1

Situated within the sought after MCentral building, this Manhattan style apartment exudes imaginative use of space and light. This unique property presents a cutting-edge lifestyle. Impeccably styled throughout with no attention to detail spared, this historic warehouse conversion offers flawless designer living ideal for the investor or first time owner alike.

Highlights include:

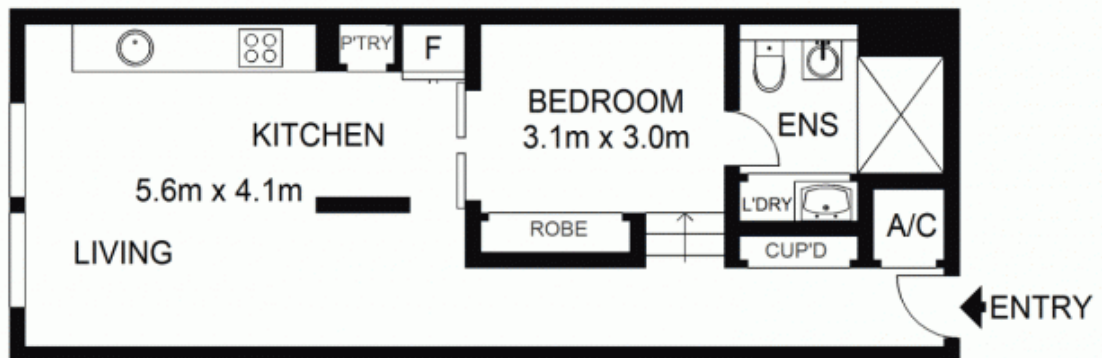
- ? Ducted air conditioning
- ? Superb polished timber flooring
- ? Gourmet kitchen with gas cooking
- ? High ceilings in true warehouse style
- ? Master bedroom with built in wardrobe
- ? Bright and cleverly configured to maximise space
- ? Vast manicured roof garden with BBQ facilities (common area)

Land Size : 46 sqm

View : <https://www.shearerproperty.com.au/sale/nsw/sydney-city/pyrmont/residential/apartment/5823584>



Sue Shearer
02 9310 1801



LEVEL FOUR



Scale shown in metres. All dimensions herein are approximate and gathered from sources believed to be reliable. Whilst every effort is made for the accuracy of our floor plans, interested parties should rely on their own enquiries. Floor Plans by Industrie Media | industriemedia.tv



S1

405/380 Harris Street, Pyrmont

shearer
property