

1144/7 Crescent Street Waterloo NSW

2 2 2

Showcasing immaculate interiors and an expansive layout, this sun filled split-level apartment captures dramatic views of the city. This apartment is bright and spacious with a floor area of 170sqm, including car spaces.

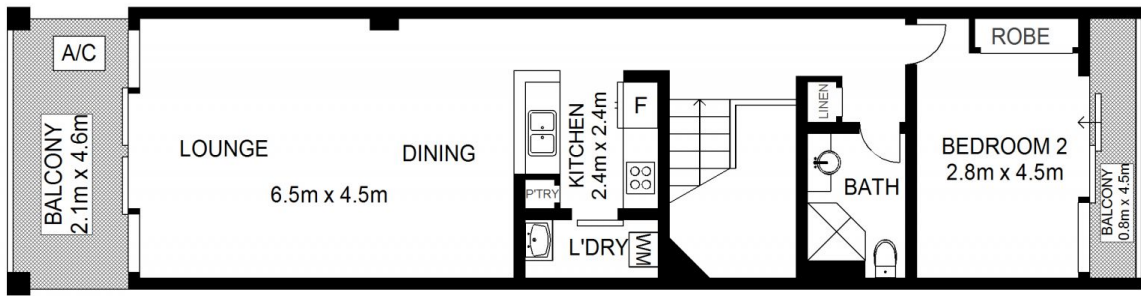
'Lumina' is a modern security building with outstanding resort style facilities including a fully equipped state of the art gymnasium and aquatic centre with lap pool, children's paddle pool and spa. A number of amenities are conveniently located on Danks Street including supermarkets, chemist, bakery, and various restaurants and cafes. This property is conveniently positioned only moments from East Village shopping centre, the Green Square Town Centre, city bus and rail transport, and in close proximity to Sydney CBD and airport.

Features include:

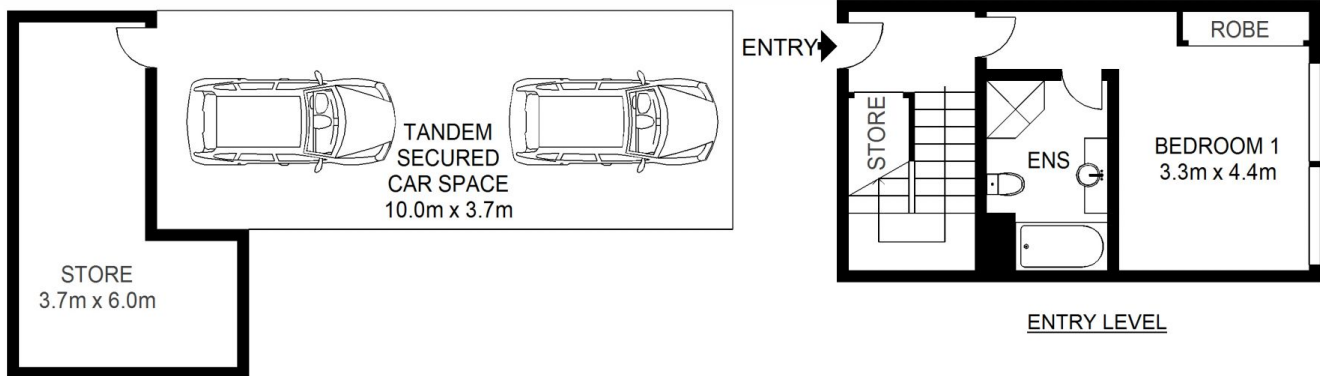
Building Size : 114 sqm
Land Size : 170 sqm
View : <https://www.shearerproperty.com.au/sale/nsw/eastern-suburbs/waterloo/residential/apartment/5823577>



Sue Shearer
02 9310 1801



UPPER LEVEL



ENTRY LEVEL



Scale shown in metres. All dimensions herein are approximate and gathered from sources believed to be reliable. Whilst every effort is made for the accuracy of our floor plans, interested parties should rely on their own enquiries. Floor Plans by Industrie Media | industriemedia.tv

S1

1144/7 Crescent Street, Waterloo