



D912/780 Bourke Street Redfern NSW

2  2  1 

Impressively well proportioned and occupying an elevated setting in what is generally considered to be one of East Redfern's most highly regarded lifestyle communities, this apartment located in the Dowling building of Moore Park Gardens, epitomizes low maintenance modern living over two levels.

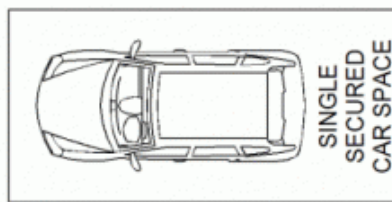
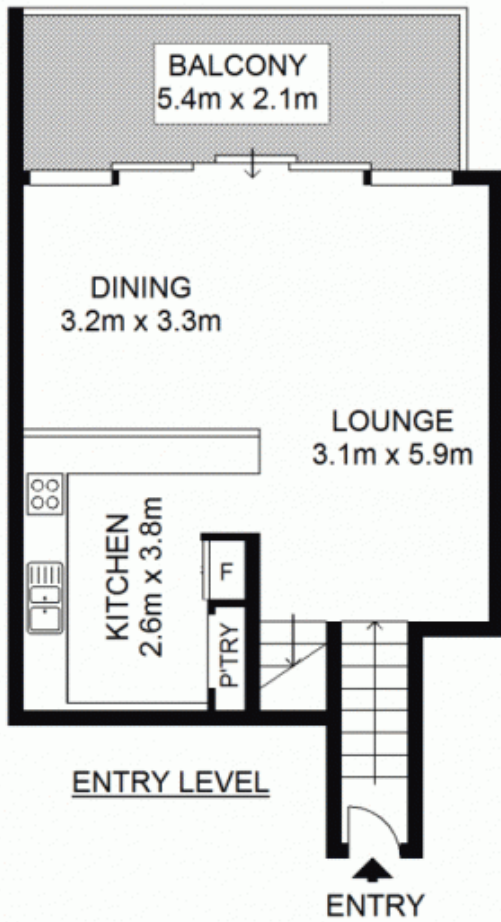
With the lower level designed for entertaining, the lounge and dining area is open plan and flows through sliding glass doors to a spacious balcony. Both bedrooms are with built-in wardrobes, whilst the master has a walk-in and an en-suite. Set up for ease of use, the kitchen has granite benches and gas appliances. There is also a laundry for added convenience.

Complete with undercover parking, security intercom and lift access. Private and peaceful, resort style facilities

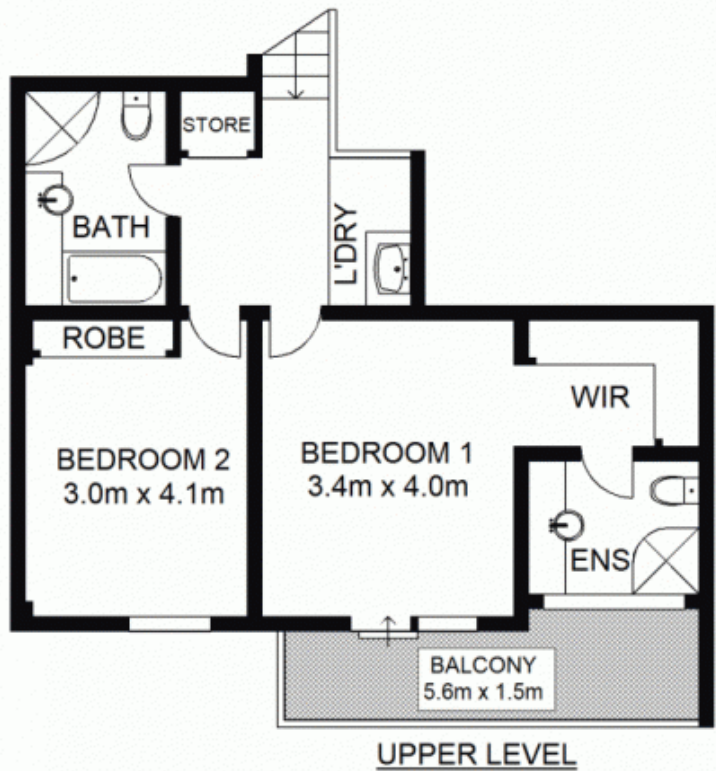
Land Size : 128 sqm
View : <https://www.shearerproperty.com.au/sale/nsw/eastern-suburbs/redfern/residential/apartment/5823570>



Sue Shearer
02 9310 1801



BASEMENT



Scale shown in metres. All dimensions herein are approximate and gathered from sources believed to be reliable. Whilst every effort is made for the accuracy of our floor plans, interested parties should rely on their own enquiries. Floor Plans by Industrie Media | industriemedia.tv

S1

D912/780 Bourke Street, Redfern

shearer
property