



502/320 Harris Street Pyrmont NSW

1 1 1

Situated within the sought after MCentral building, this Manhattan style apartment exudes imaginative use of space and light with its ultra-funky features. As new throughout, this apartment is a wonderful first home.

Land Size : 78 sqm

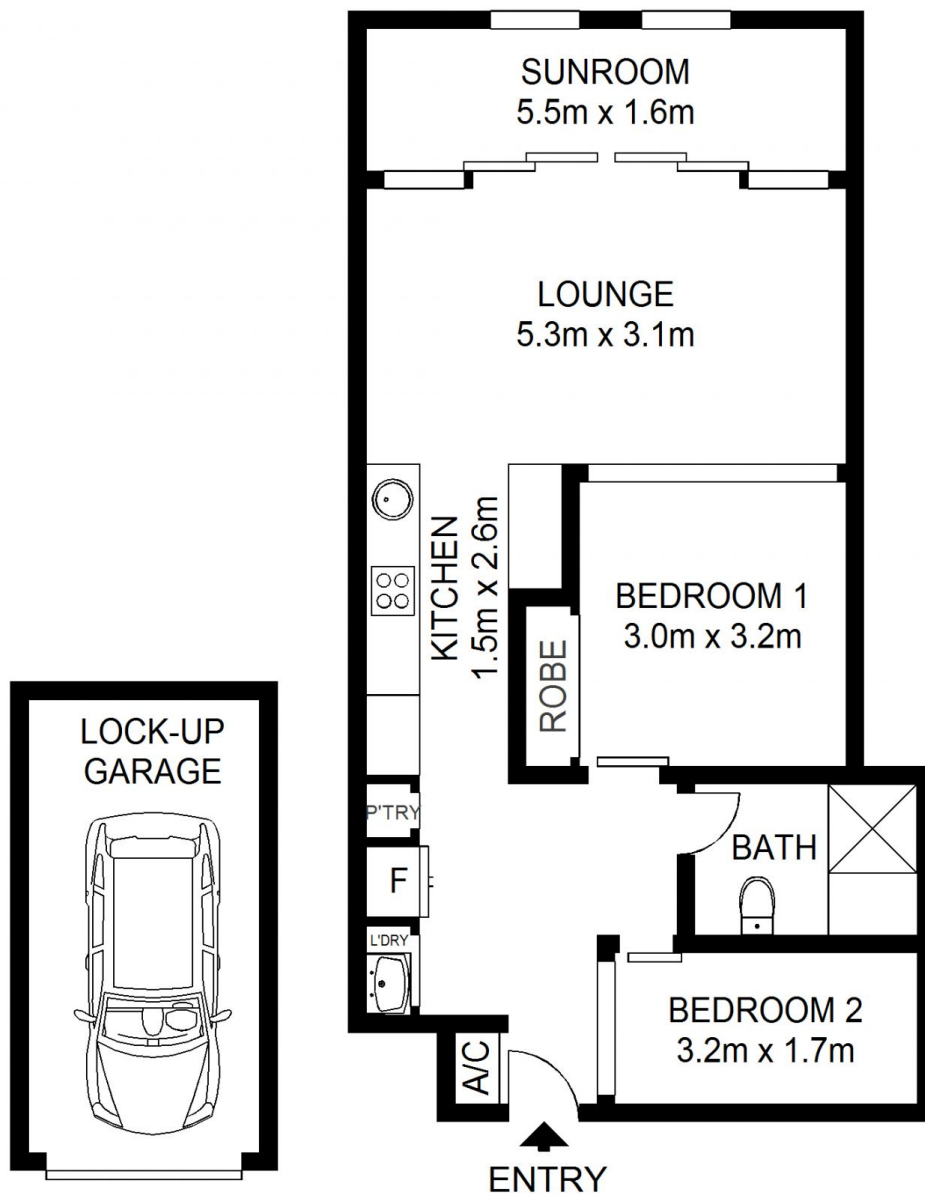
View : <https://www.shearerproperty.com.au/sale/nsw/sydney-city/pyrmont/residential/apartment/5823567>

Features include:

- . High ceilings in true warehouse style
- . Superb polished timber flooring & brand new carpet
- . Spacious master b/r with built-ins
- . Large STUDY Ideal 2nd bedroom for baby or guests
- . Gourmet kitchen with gas cooking
- . Ideal Northerly aspect
- . Extra sunroom or study area
- . Modern bathroom
- . Ducted air conditioning
- . Lock up garage on same level
- . Total area: 78sqm. incl. garage



Sue Shearer
02 9310 1801



Scale shown in metres. All dimensions herein are approximate and gathered from sources believed to be reliable. Whilst every effort is made for the accuracy of our floor plans, interested parties should rely on their own enquires. Floor Plans by Industrie Media | industriemedia.tv



S1

502/320 Harris Street, Pyrmont

shearer
property