



421/320 Harris Street Pyrmont NSW

2 2 1

Situated within the popular M Central complex and part of the historic Goldsbrough wool stores, this New York loft style apartment offers unique interior finishes and a fabulous two storey layout.

Features include:

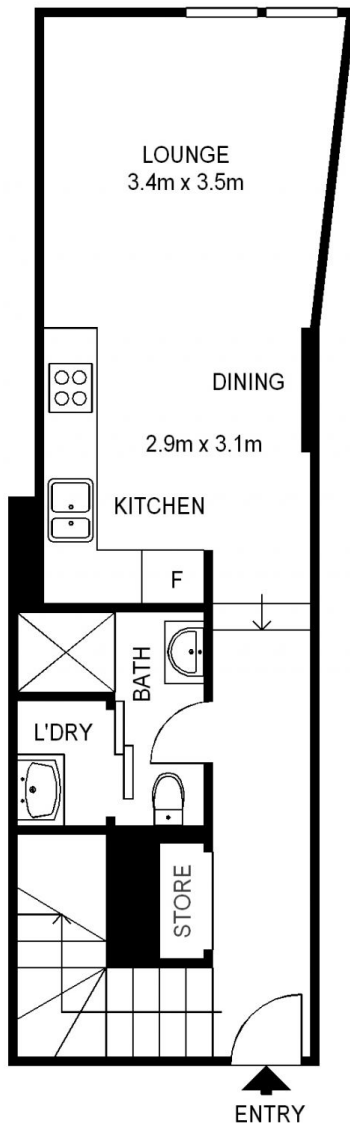
- . Superb high ceilings with cement features
- . Polished floorboards and original windows
- . Large master bedroom with in-built study desk
- . Second bedroom opens onto private courtyard
- . Built-ins in both bedrooms
- . Two designer bathrooms
- . Gourmet gas kitchen with quality stainless appliances
- . Security building with lift access, on site management
- . Parking on same level as the apartment
- . Total area: 96 sqm. including car space
- . Pet Friendly building

Land Size : 96 sqm

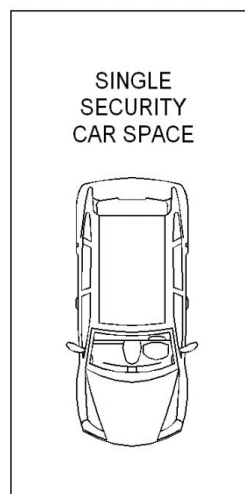
View : <https://www.shearerproperty.com.au/sale/nsw/sydney-city/pyrmont/residential/apartment/5823566>



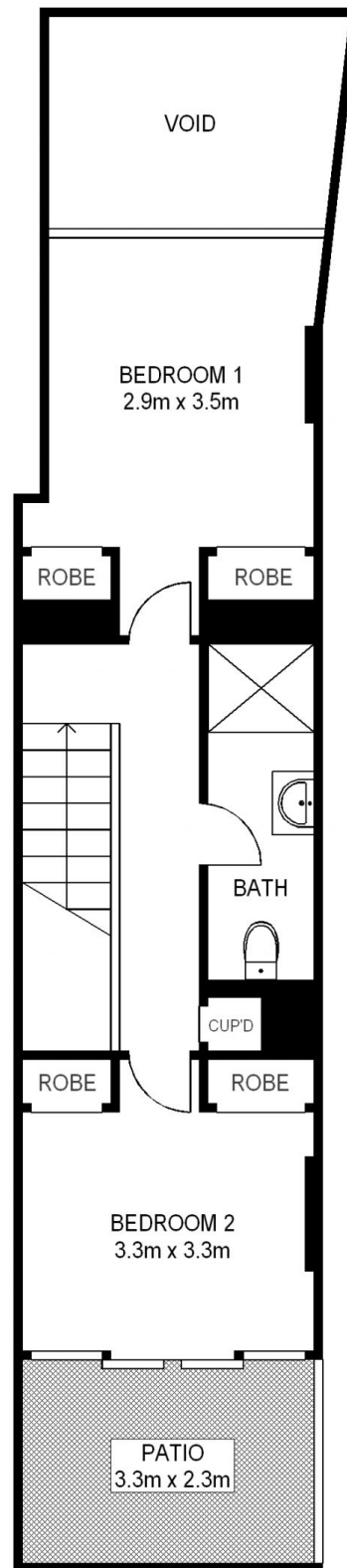
Sue Shearer
02 9310 1801



LOWER LEVEL



LEVEL FOUR



UPPER LEVEL



Scale shown in metres. All dimensions herein are approximate and gathered from sources believed to be reliable. Whilst every effort is made for the accuracy of our floor plans, interested parties should rely on their own enquires. Floor Plans by Industrie Media. www.industriemedia.com.au



S1

421/320 Harris Street, Pyrmont

shearer
property