

## A608/780 Bourke Street Redfern NSW

2 2 1

Located in the Argyle building in the sought after Moore Park Gardens complex, this great two bedroom apartment has much to offer. Ideal layout and just waiting for your personal contribution to add to its value.

### Features include:

- . Two large bedrooms, both with built-ins
- . Main bedroom complete with ensuite
- . Open plan living
- . Large kitchen with gas cooktop. Lots of storage & bench area
- . Private sunny balcony
- . Security building plus security parking
- . Total Area: 113 sqm. incl. carspace
- . On site building management

**Land Size** : 113 sqm

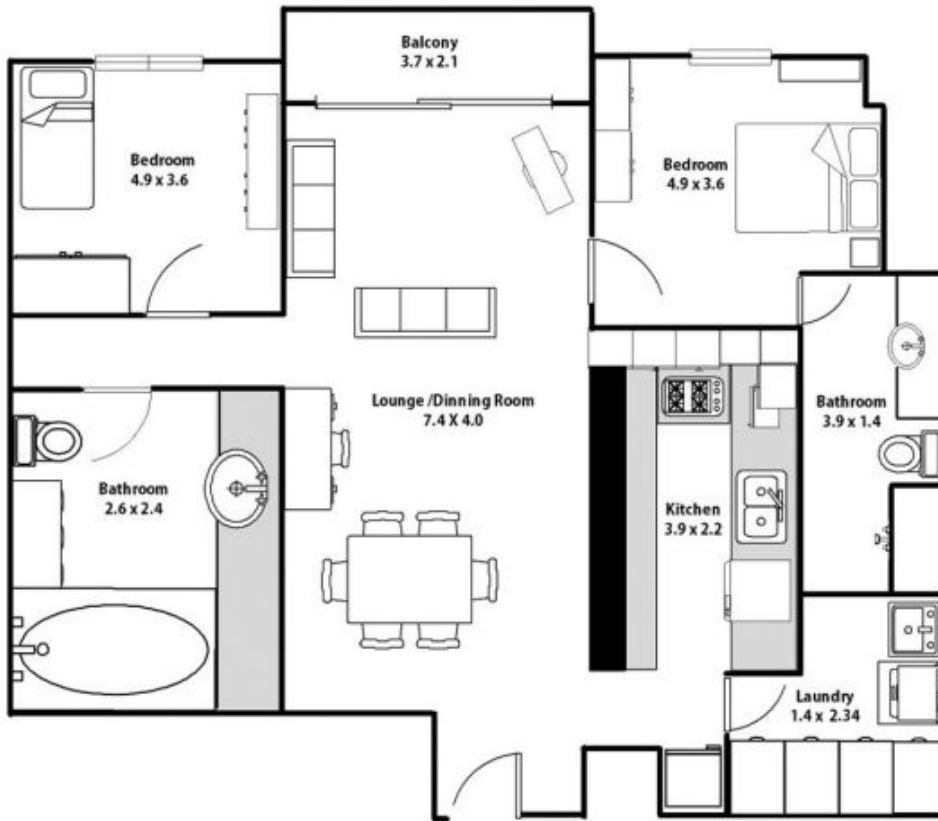
**View** : <https://www.shearerproperty.com.au/sale/nsw/eastern-suburbs/redfern/residential/unit/5823561>



**Sue Shearer**  
02 9310 1801

Enjoy the resort style facilities including 25 metre outdoor

# A608/780 Bourke St Redfern



Carspace

**shearer**  
property

**Agent: Sue Shearer 0411 804 925**

Warning: Any financial or investment advice provided by the Agent is of a general nature only, whose preparation does not take into account the individual circumstances, objectives, financial Situation or the needs of the person. You are advised to consult with your own independent financial and or investment advisor.

FLOOR PLAN BY WATERLOO PICTURES PH: 042 058 2469

The information contained within has been provided by our Principal and Third parties, which we merely pass on without any representations or Warranty given, intended or implied by its correctness and with no Liability accepted by us in this regard, you must rely on your own inquiries As to its accuracy's or otherwise".