

**709/380 Harris Street Pyrmont NSW**

**2**  **2**  **1** 

Presenting a unique opportunity to own one of only 9 sky homes in Pyrmont's exclusive MCENTRAL complex, part of the historic Woolstores redevelopment. This two bedroom apartment has an open living and dining area that flows to a fabulous private outdoor courtyard & garden for effortless alfresco entertaining. Featuring a modern design with complete luxury in mind, this is a property not to be missed.

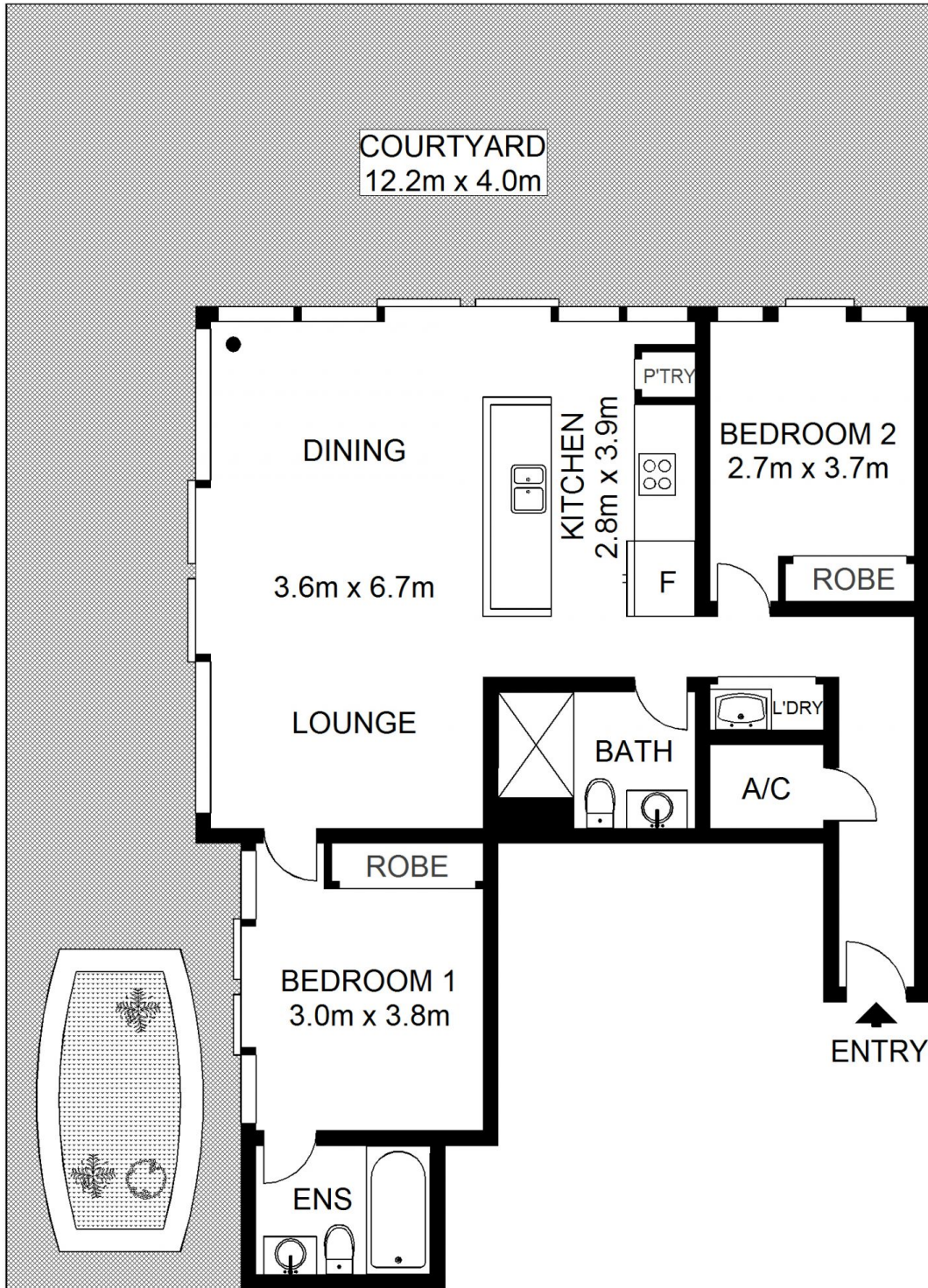
**Land Size** : 180 sqm  
**View** : <https://www.shearerproperty.com.au/sale/nsw/sydney-city/pyrmont/residential/apartment/5823560>

Features include:

- \* Access to Sydney CBD via a covered walkway to Darling Harbour and all that it offers.
- \* Master bedroom with built in robe and ensuite
- \* Open plan lounge/dining flowing out to the garden courtyard
- \* Modern kitchen with stainless steel appliances
- \* Peaceful, relaxing private courtyard with a large



**Sue Shearer**  
**02 9310 1801**



Scale shown in metres. All dimensions herein are approximate and gathered from sources believed to be reliable. Whilst every effort is made for the accuracy of our floor plans, interested parties should rely on their own enquiries. Floor Plans by Industrie Media | [industriemedia.tv](http://industriemedia.tv)

S1

709/380 Harris Street, Pyrmont

**shearer**  
property