



A302/780 Bourke Street Redfern NSW

2 2 1

Located in the Argyle building of the popular Moore Park Gardens, this immaculate two bedroom plus study apartment is sure to impress. With its large courtyard and access to private grassed common area, this is perfect for the growing family. Offering an expansive living area opening onto the entertaining courtyard area, a superb designer kitchen with maximum space and convenience in mind, two large bedrooms with built in robes and the potential to be converted to a 3 bedroom apartment.

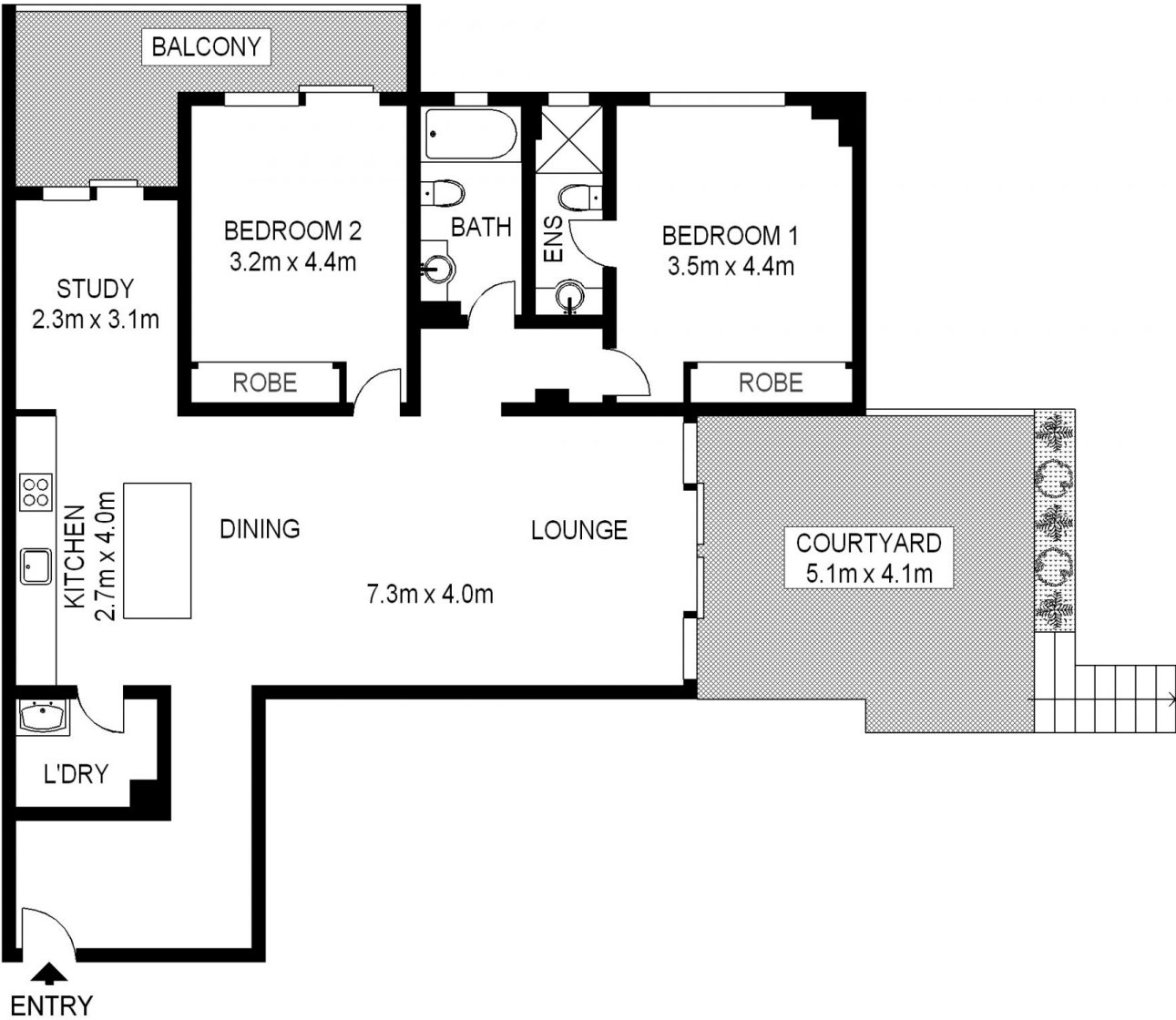
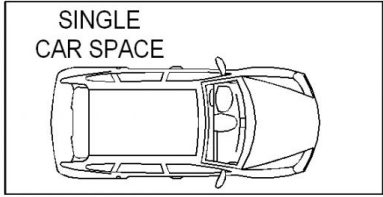
Features Include:

- 2 Bedrooms with built ins
- Study/3rd bedroom
- Balcony off study and bedroom
- Main bedroom with ensuite
- Large modern kitchen with gas appliances

Building Size : 161 sqm
View : <https://www.shearerproperty.com.au/sale/nsw/eastern-suburbs/redfern/residential/apartment/5823557>



Sue Shearer
 02 9310 1801



Scale shown in metres. All dimensions herein are approximate and gathered from sources believed to be reliable. Whilst every effort is made for the accuracy of our floor plans, interested parties should rely on their own enquiries. Floor Plans by Industrie Media | industriemedia.tv

S1

A302/780 Bourke Street, REDFERN

