



G1512/780 Bourke Street Redfern NSW

2 2 1

Unique opportunity has presented itself with the opportunity to buy into the popular Grosvenor Building in Moore Park Gardens.

This apartment has been renovated to perfection, featuring open plan, split level living opening onto a good sized balcony with northerly aspect for easy entertaining. It offers a luxury lifestyle close to the CBD.

Enjoy the resort style facilities including 25m pool, sauna and residents only gym or discover the vibrant galleries, cafes and restaurants in the surrounding area.

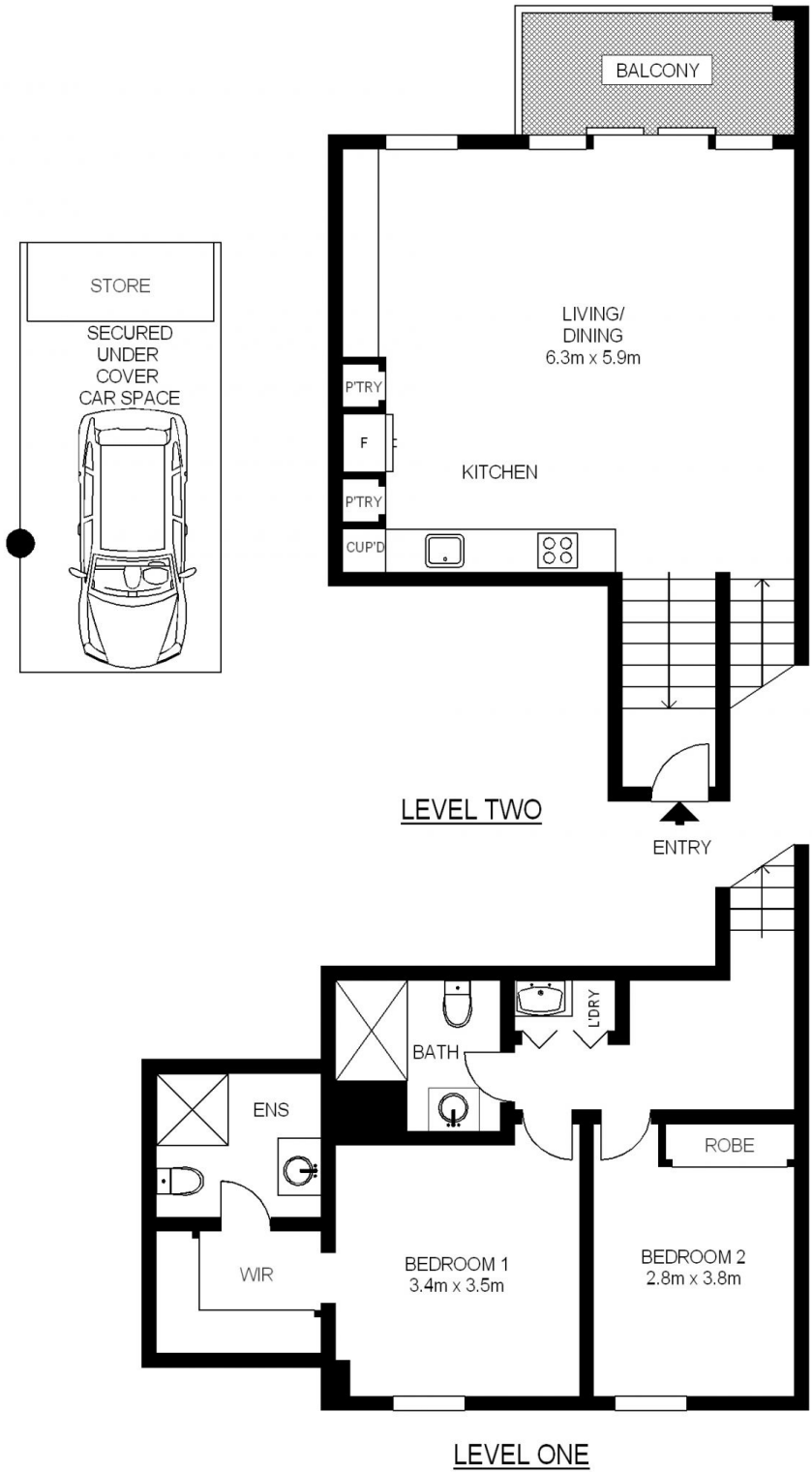
Features Include:

- Modern Open Plan design
- Luxury split level living
- 2 bedrooms, both with built in robes
- Main bedroom complete with en-suite
- Good sized balcony with amazing city skyline views and

Building Size : 113 sqm
View : <https://www.shearerproperty.com.au/sale/nsw/eastern-suburbs/redfern/residential/apartment/5823553>



Sue Shearer
02 9310 1801



Scale shown in metres. All dimensions herein are approximate and gathered from sources believed to be reliable. Whilst every effort is made for the accuracy of our floor plans, interested parties should rely on their own enquiries. Floor Plans by Industrie Media | industriemedia.tv

S1

G1512/780 Bourke Street, Redfern

shearer
property