



## L302/780 Bourke Street Redfern NSW

2 2 2

Privately positioned within the Lemont building of the award winning Allen Jack + Cottier's prestigious 'Moore Park Gardens', this two-storey terrace style apartment gazes north over Edmund Resch Reserve. Offering a fantastic layout with living area opening to a private entertainers courtyard.

**Price** : \$ 1,200,000

**View** : <https://www.shearerproperty.com.au/sale/nsw/ea-stern-suburbs/redfern/residential/apartment/5823544>

### Features Include:

Large Open plan living opening to north facing private courtyard

Two bedrooms with built ins, ensuite in the main

Modern kitchen with dishwasher and gas cooking

Main bathroom with separate shower and bath

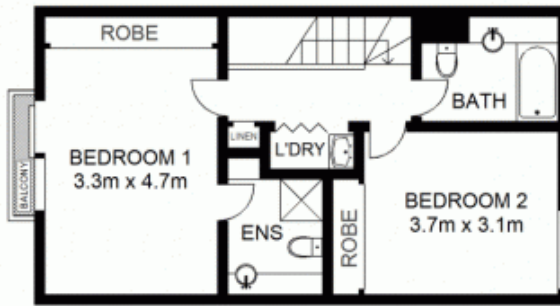
Internal laundry and storage under the stairs

Security building, on site building management

Double parking plus caged lock up storage



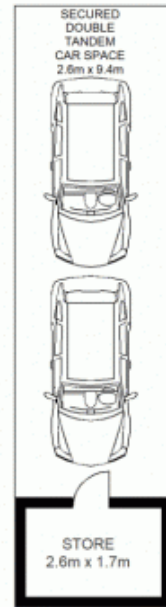
**Sue Shearer**  
02 9310 1801



UPPER FLOOR



ENTRY LEVEL  
(LEVEL THREE)



GROUND LEVEL



Scale shown in metres. All dimensions herein are approximate and gathered from sources believed to be reliable. Whilst every effort is made for the accuracy of our floor plans, interested parties should rely on their own enquiries. Floor Plans by Industrie Media | industriemedia.tv



L302/780 Bourke Street, Redfern