



## C417/6-8 Crescent Street Redfern NSW

1 1 1

Set in the renowned Allan Jack & Cottier designed complex, Moore Park Gardens, this beautifully presented apartment is set across two levels with an ideal northerly aspect. A great investment or first home.

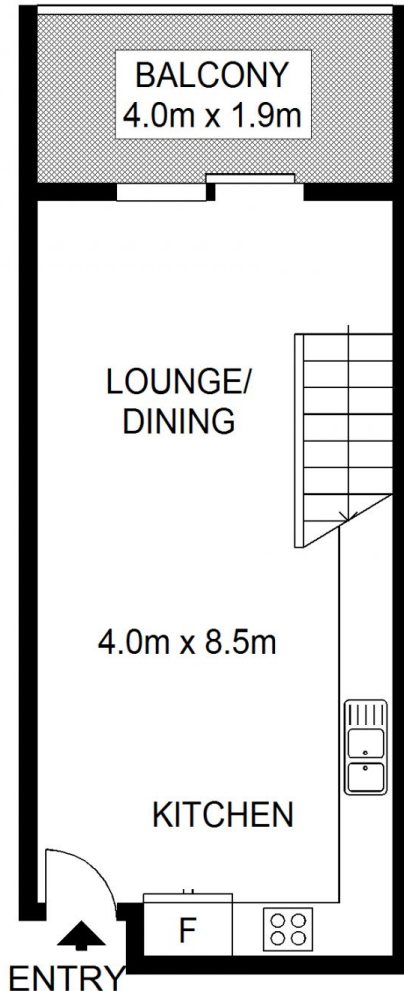
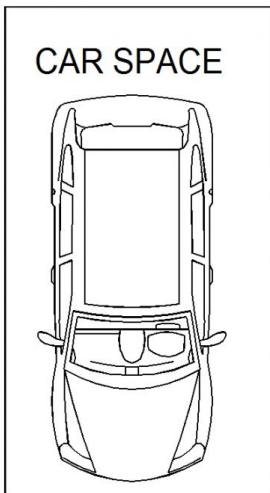
**View** : <https://www.shearerproperty.com.au/sale/nsw/eastern-suburbs/redfern/residential/apartment/5823532>

### Features include:

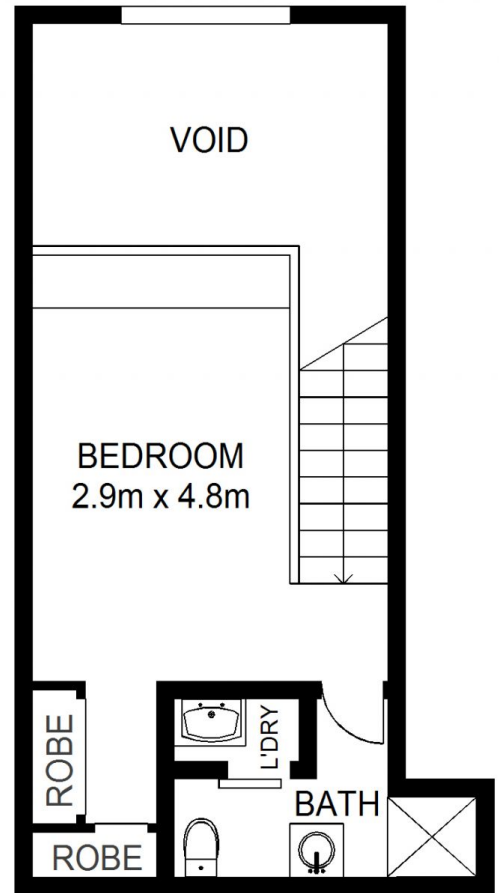
- . Spacious open plan living opening onto sunny balcony
- . Spacious loft bedroom
- . Built-ins
- . Modern kitchen with gas cooking
- . Modern bathroom
- . Air conditioning
- . Security parking
- . On-site Management & Security
- . 25m pool, gym & sauna
- . 78 sq.m including carspace



**Sue Shearer**  
02 9310 1801



ENTRY LEVEL



TOP LEVEL



Scale shown in metres. All dimensions herein are approximate and gathered from sources believed to be reliable. Whilst every effort is made for the accuracy of our floor plans, interested parties should rely on their own enquires. Floor Plans by Industrie Media | [industriemedia.tv](http://industriemedia.tv)

S1

C417/6-8 Crescent Street, Redfern

**shearer**  
property