



G1518/780 Bourke Street Redfern NSW

3 2 2

This apartment is perched high on the fifteenth floor of the sought after Grosvenor building located within the Moore Park Gardens precinct. With a stunning northerly aspect, the panoramic city views are to be envied.

This exceptional, split level apartment offers a large open plan living area opening to a north facing balcony for easy entertaining.

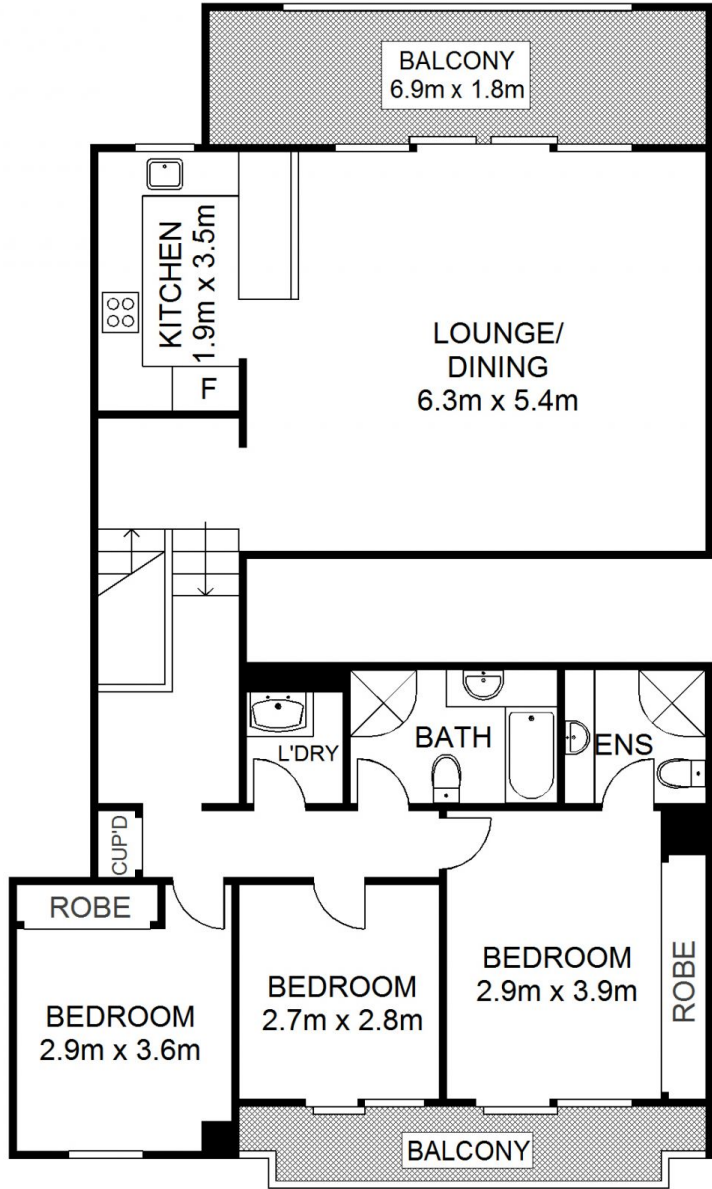
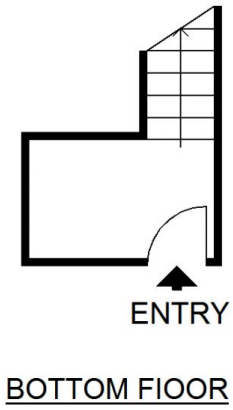
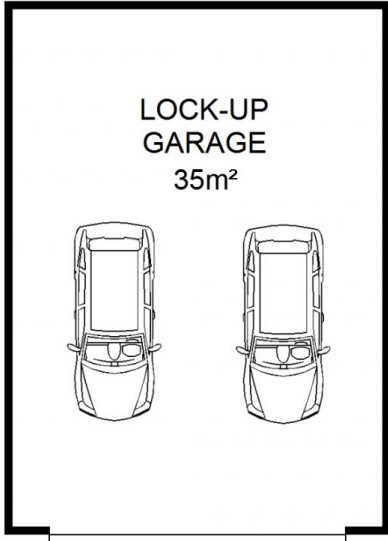
Features Include:

- Parquetry flooring through out living areas
- Master bedroom includes ensuite and large built in wardrobes
- Beautifully renovated kitchen with dishwasher & gas cook top
- North/south breeze cooling the apartment through the summer months

Building Size : 112 sqm
View : <https://www.shearerproperty.com.au/sale/nsw/eastern-suburbs/redfern/residential/apartment/5823461>



Sue Shearer
02 9310 1801



TOP FLOOR



Scale shown in metres. All dimensions herein are approximate and gathered from sources believed to be reliable. Whilst every effort is made for the accuracy of our floor plans, interested parties should rely on their own enquiries. Floor Plans by Industrie Media | industriemedia.tv

S1

G1518/780 Bourke Street, Redfern

shearer
property