



## UG08/320 Harris Street Pyrmont NSW

2  2  1 

Situated in the popular M-Central building, part of the old Wool Stores, this two bedroom apartment promises an inner city lifestyle of unmatched convenience.

**View** : <https://www.shearerproperty.com.au/sale/nsw/sydney-city/pyrmont/residential/apartment/5823455>

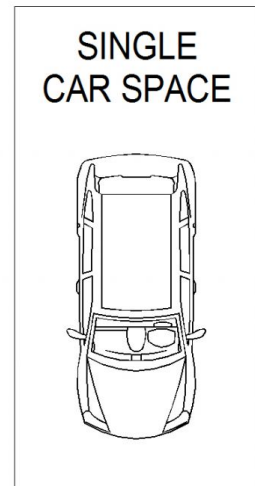
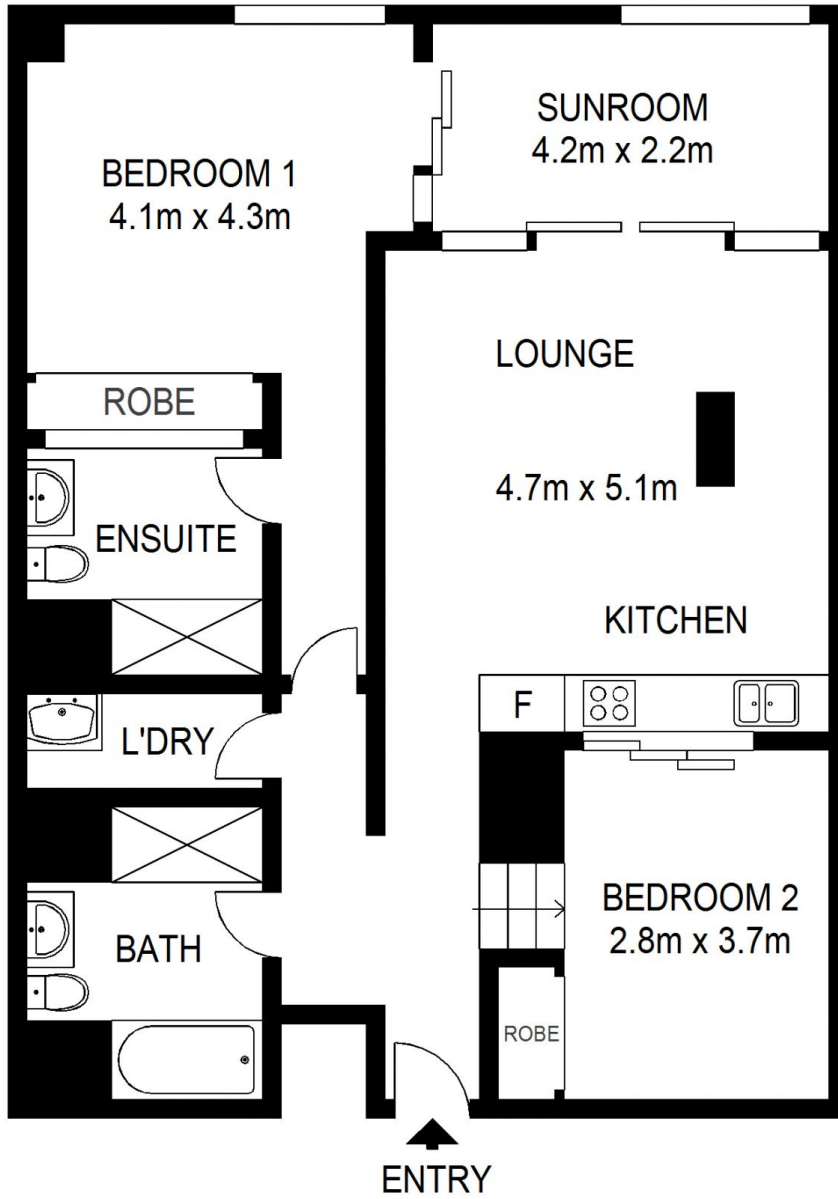
### Features Include:

- Polished Floorboards & high ceiling in true warehouse conversion style
- Sun room / Study
- Gourmet kitchen including dishwasher, microwave and gas cooking
- Master bedroom with ensuite bathroom
- Total area approx 117sqm (incl car space)
- Security parking on same level as the apartment.
- Building Manager and Security on Site
- Fabulous roof top garden (common property)



**Sue Shearer**  
02 9310 1801

MCentral is conveniently connected to the hub of Darling



Scale shown in metres. All dimensions herein are approximate and gathered from sources believed to be reliable. Whilst every effort is made for the accuracy of our floor plans, interested parties should rely on their own enquiries. Floor Plans by Industrie Media | [industriemedia.tv](http://industriemedia.tv)



S1

UG08/320 Harris Street, Pyrmont

**shearer**  
property