



G913/780 Bourke Street Redfern NSW

2 2 1

This two bedroom, two bathroom split level apartment is located in the sought after Grosvenor building, part of the award winning Moore Park Gardens precinct. With a northerly aspect, this apartment is bathed in natural light and enjoys breathtaking city skyline views. Perfect for the professional couple or the investor.

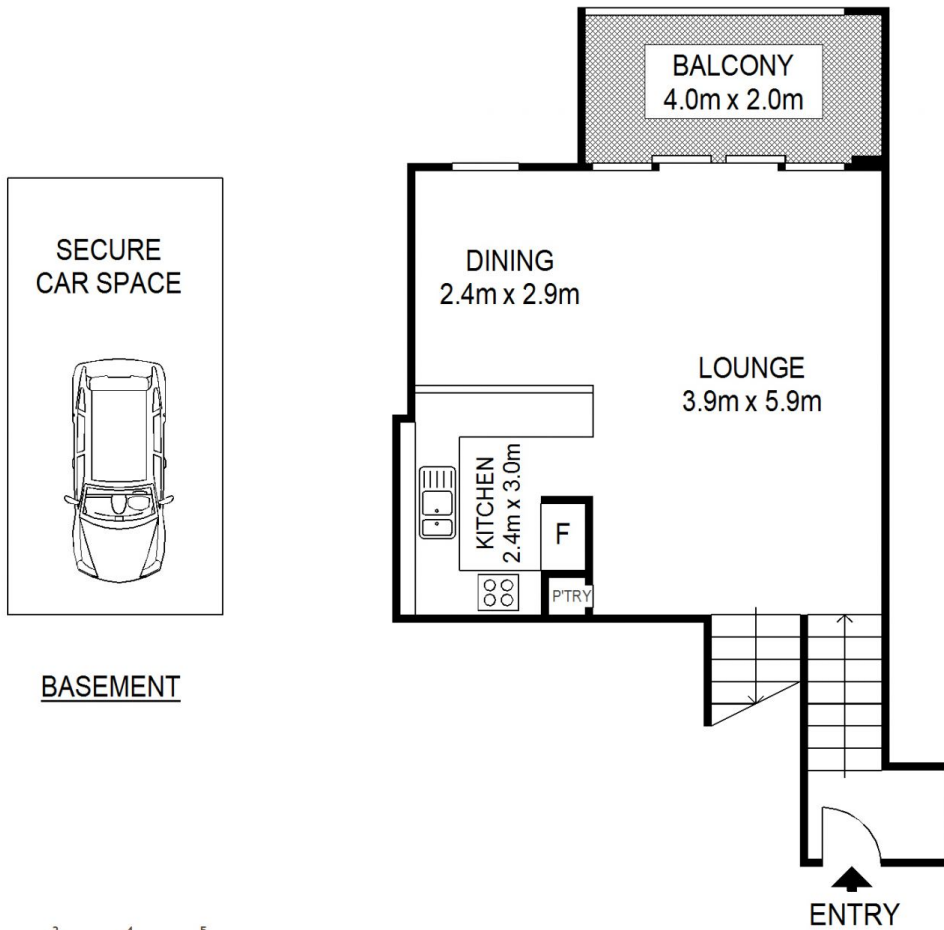
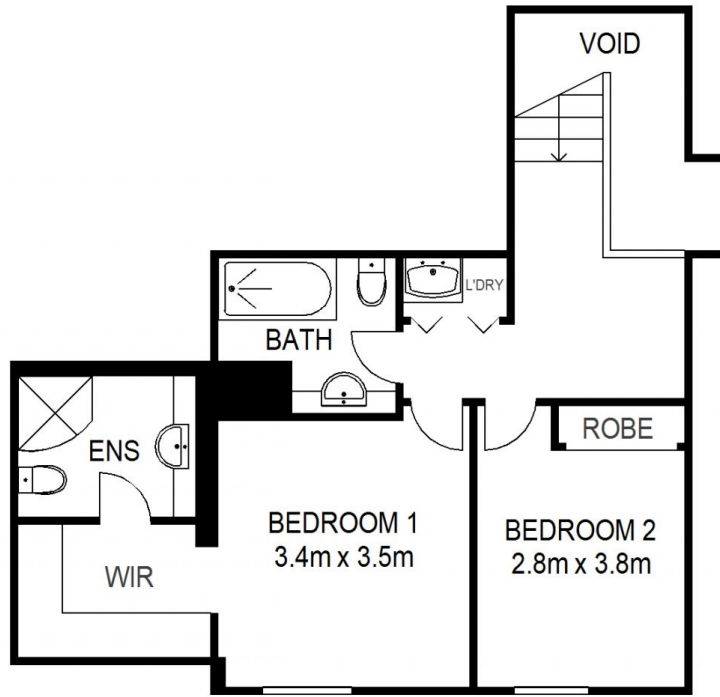
View : <https://www.shearerproperty.com.au/sale/nsw/eastern-suburbs/redfern/residential/apartment/5823454>

Features include:

- Two double bedrooms with built ins. Master with large walk in robe and ensuite
- Large open plan lounge/dining area opening to north facing balcony
- Renovated kitchen with gas cook top and dishwasher
- North/south aspect providing cooling breeze through the summer months
- Internal laundry
- Security carspace



Sue Shearer
02 9310 1801



Scale shown in metres. All dimensions herein are approximate and gathered from sources believed to be reliable. Whilst every effort is made for the accuracy of our floor plans, interested parties should rely on their own enquiries. Floor Plans by Industrie Media | industriemedia.tv



S1

G913/780 Bourke Street, Redfern

shearer
property