



**G309/780 Bourke Street Redfern NSW**

2 2 1

This great single level apartment is located within sought after Grosvenor building in the Moore Park Gardens precinct. This immaculate, architecturally designed apartment offers spacious open plan living.

**Features Include:**

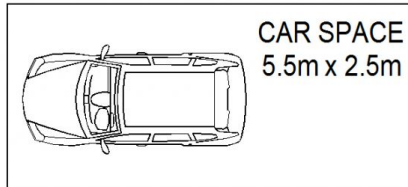
- Large bedrooms with built in robes, main with ensuite
- Open plan lounge/dining flowing to balcony
- Generous study area
- Renovated kitchen
- Air conditioning & Jarrah flooring
- Approx total area 127sqm incl. carspace
- Resort style facilities including pool, gym and sauna
- Security building with on site building manager

Conveniently positioned with a variety of entertainment options. Enjoy the resort style facilities including pool, gym

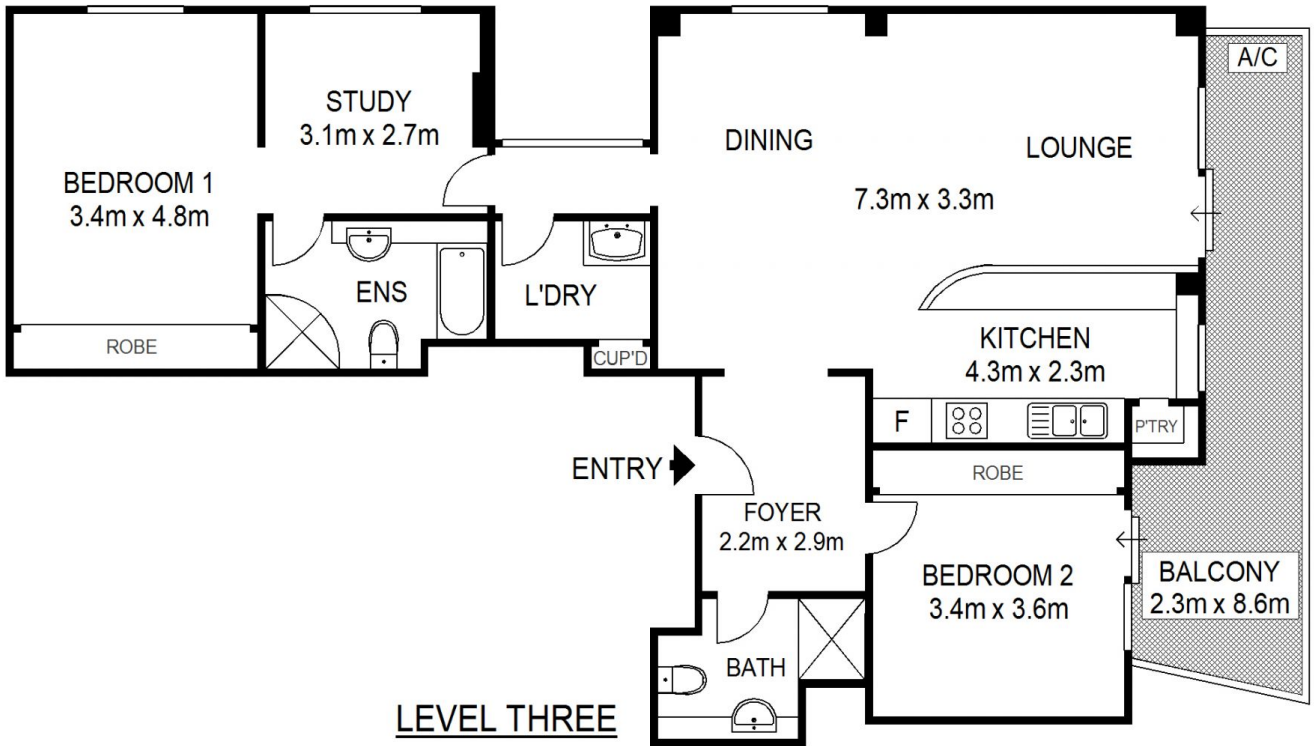
**Building Size** : 12 sqm  
**View** : <https://www.shearerproperty.com.au/sale/nsw/eastern-suburbs/redfern/residential/apartment/5823452>



**Sue Shearer**  
**02 9310 1801**



**BASEMENT**



Scale shown in metres. All dimensions herein are approximate and gathered from sources believed to be reliable. Whilst every effort is made for the accuracy of our floor plans, interested parties should rely on their own enquiries. Floor Plans by Industrie Media | [industriemedia.tv](http://industriemedia.tv)

S1

G309/780 Bourke Street, Redfern