



D2111/780 Bourke Street Redfern NSW

2 2 1

Located within the popular Moore Park Gardens complex, this tasteful split-level apartment on the 21st floor offers generous open plan living and uninterrupted city views from the north-facing balcony.

View : <https://www.shearerproperty.com.au/lease/nsw/eastern-suburbs/redfern/residential/apartment/5823440>

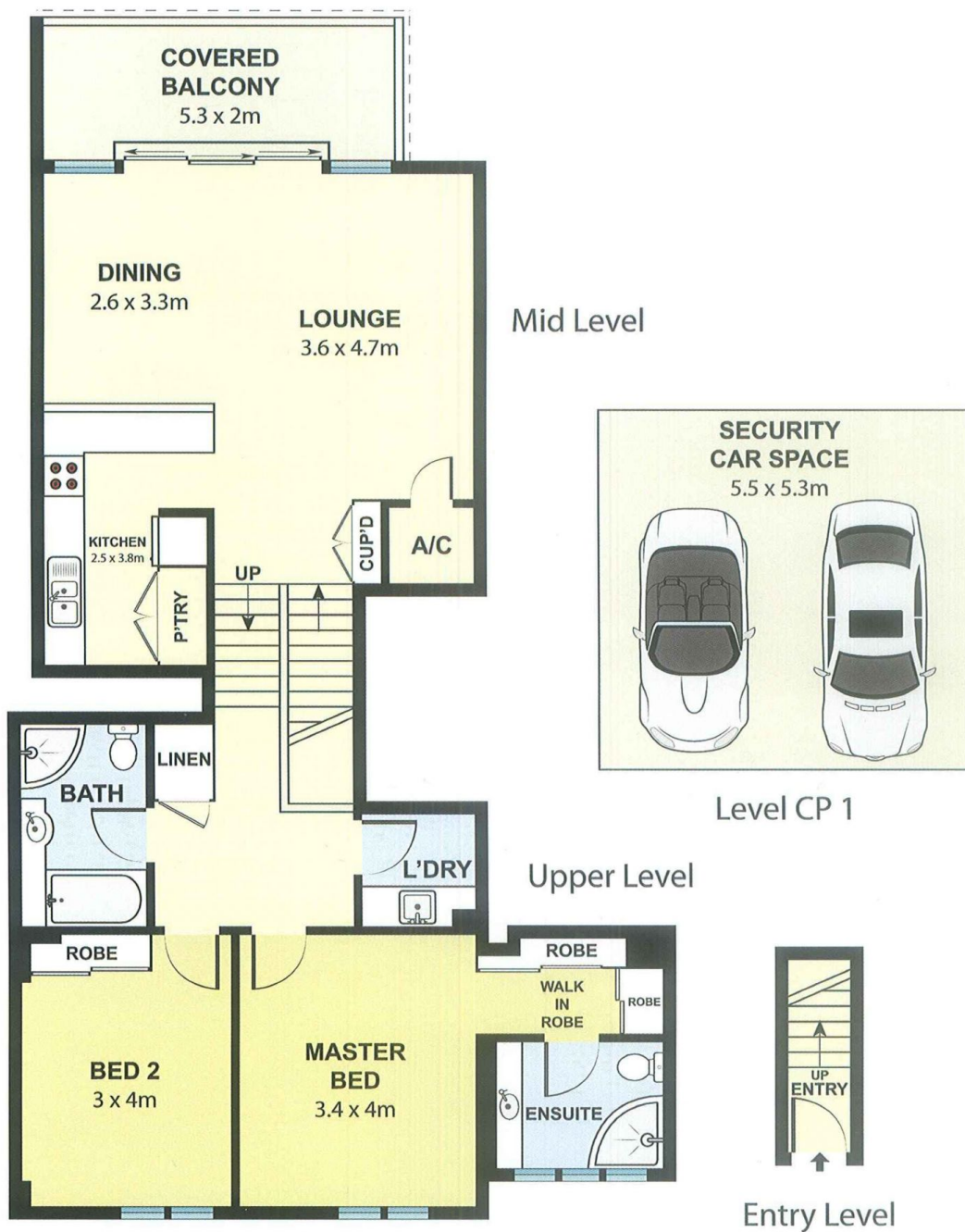
Property Features:

- *Spacious living/dining
- *Modern gas kitchen with stainless steel appliances
- *Two large bedrooms with built in robes, main with en suite
- *Large bathroom with separate bath and shower
- *Internal laundry with dryer and ample storage
- *Ducted air conditioning
- *Security building with lift access, secure car space

Close to parks, shops, restaurants and transport and just minutes to the CBD.



Sue Shearer
02 9310 1801



D2111/780 Bourke Street, Redfern

Scale in metres. Indicative only. Dimensions are approximate. All information contained here in is gathered from sources we believe to be reliable. However we cannot guarantee its accuracy and interested persons should rely on their own enquiries.