



H103/780 Bourke Street Redfern NSW

1 1 1

Spanning two levels, this one bedroom apartment is located in the Hopetoun terraces, part of the award winning Moore Park Gardens precinct. An apartment like this is rarely released to the market being tightly held by their owners.

View : <https://www.shearerproperty.com.au/sale/nsw/ea-stern-suburbs/redfern/residential/apartment/5823300>

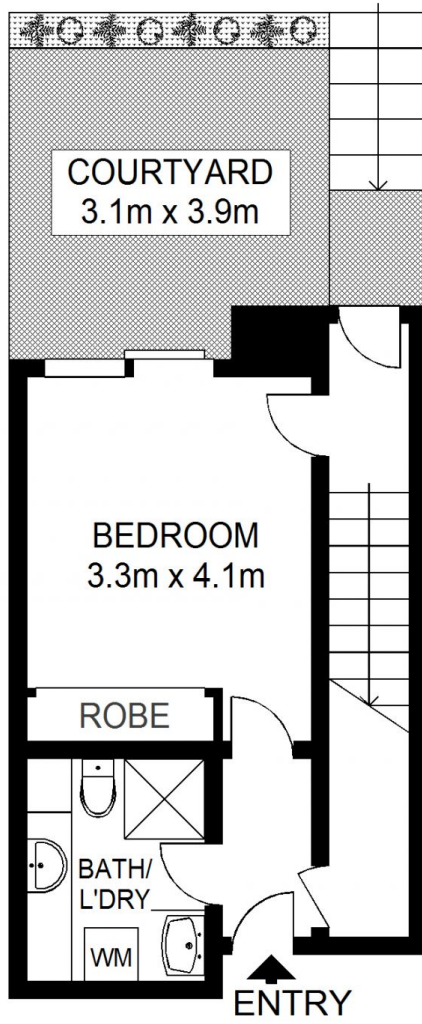
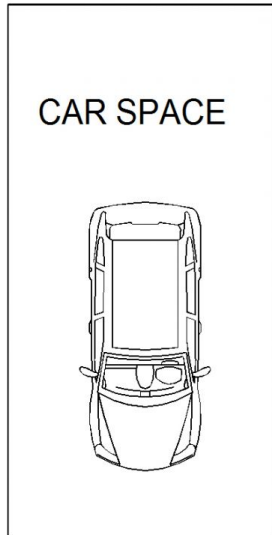
Three terraces provide an opportunity for private enjoyment or easy entertaining. With the potential to create a stylish and contemporary home, it is an ideal first home or investment.



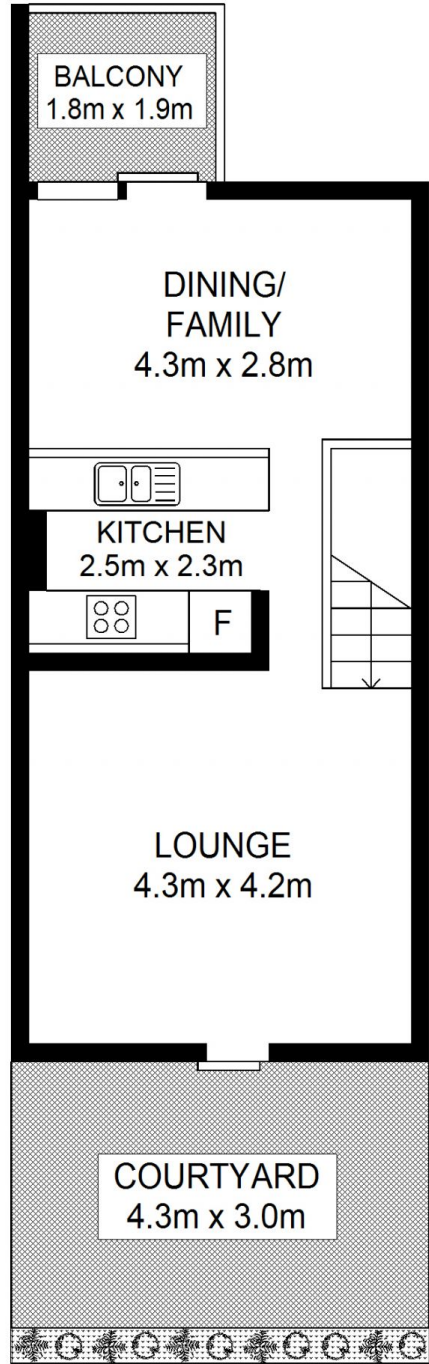
Sue Shearer
02 9310 1801

Features include:

- Open plan, versatile living space opening to two private terraces
- Dual aspect, providing great flow through, perfect for those summer days
- Spacious one bedroom flowing to its own private terrace



ENTRY LEVEL



TOP LEVEL



Scale shown in metres. All dimensions herein are approximate and gathered from sources believed to be reliable. Whilst every effort is made for the accuracy of our floor plans, interested parties should rely on their own enquiries. Floor Plans by Industrie Media | industriemedia.tv



S1

H103/780 Bourke Street, Redfern